

PERC Table 1
Viscaria Exploration Results, Q4 2025

FEBRUARY 2026



Table of Contents

PERC REPORTING STANDARD	1
Section 1 Project Outline	1
1.0. Introduction – General	1
1.1. Property Description.....	2
1.2. Location	4
1.3. Adjacent Properties	4
1.4. History	5
1.5. Legal Aspects and Permitting	6
1.6. Royalties	7
1.7. Liabilities	8
Section 2 Geological Setting, Deposit, Mineralisation	9
2.1. Geological Setting, Deposit Type and Mineralisation Style	9
Section 3 Exploration and Drilling, Sampling Techniques and Data.....	13
3.1. Exploration	13
3.2. Drilling Techniques	14
3.3. Sample Method, Collection, Capture, and Storage	15
3.4. Sample Preparation and Analysis	16
3.5. Sampling Governance	17
3.6. Quality Control/Quality Assurance	18
3.7. Bulk Density	18
3.8. Bulk-Sampling and/or Trial-mining	19
Section 4 Estimation and Reporting of Exploration Results, Mineral Resources and Mineral Reserves	20
4.1. Geological model and interpretation	20
4.2. Estimation and modelling techniques	21
4.3. Reasonable prospects for eventual economic extraction.....	22
4.4. Classification Criteria	22
4.5. Reporting	23
4.5. Reporting.....	24
Section 5 Technical Studies.....	25
5.1. Introduction	25
5.2. Mining Design.....	26
5.3. Metallurgical and Test work.....	28
5.4. Infrastructure.....	30
5.5. Environmental, Social Performance, and Governance.....	31
5.6. Market Studies and Economic Criteria	35
5.7. Risk Analysis.....	39
5.8. Economic Analysis	39

Section 6 Estimation and Reporting of Mineral Reserves	41
6.1. Estimation and Modelling Techniques.....	41
6.2. Classification Criteria	43
6.3. Reporting.....	43
6.4. Specific for Metal Equivalents or Combined Grades Reporting	45
Section 7 Audits and Reviews	46
7.1. Audits and Reviews	46
Section 8 Other Relevant Information.....	47
8.1. Other Relevant Information	47
Section 9 Qualification of Competent Person(s) and other key technical staff. Date and Signature Page.....	48
9.1. Competent Person Details.....	48
APPENDIX 1: FIGURES	49
APPENDIX 2: ASSAY RESULTS	54
APPENDIX 2.1: Summary	54
APPENDIX 2.2: Full assay results.....	55
APPENDIX 3: REFERENCES.....	77
APPENDIX 4: CERTIFICATE OF COMPETENT PERSON	78

Table 1. PERC Reporting Standard

PERC REPORTING STANDARD

Section 1 Project Outline				
1.0. Introduction – General				Back to Table of Contents
	Exploration Results	Mineral Resources	Mineral Reserves	Competent Person's Report (CPR)
(i)	The terms of reference or scope of work.			<ul style="list-style-type: none"> Reporting of PERC (2021) compliant Exploration Results of the Viscaria deposit located in Kiruna, Sweden. The Report has been prepared by Viscaria Kiruna AB ("VISCARIA"), formerly Copperstone Viscaria AB ("Copperstone") to disclose the most recent results from the near mine exploration campaigns performed in 2025. The program has been performed close in accordance with the Pan European Reserves and Resources Reporting Committee ("PERC") on the Viscaria Copper-Iron Project in Sweden. This report covers assay results for three diamond drillholes completed during the current drilling program: two holes targeting the gap between B Zone and B Zone Deep, and one hole targeting the deeper part of D Zone. Two additional drillholes have been completed and sampled as part of this program, with assays pending from the laboratory. These pending holes comprise one drillhole targeting the B Zone to B Zone Deep gap and one drillhole targeting the down-dip extension of D Zone mineralization. The report is prepared by Gruvaktiebolaget Viscaria and evaluated by an independent Competent Person (CP): Mr. Thomas Lindholm.
(ii)	The Competent Person's relationship to the issuer of the report, if any.			<ul style="list-style-type: none"> The CP for the Exploration Results is Mr. Thomas Lindholm MSc FAusIMM, FAMMP, who is a senior associate of and Principal Consultant (Resource Geology) at GeoVista AB. He is a Fellow of the Australasian Institute of Mining and Metallurgy, a Recognised Professional Organisation ("RPO") within the meaning of PERC. Mr. Lindholm is a senior mining engineer and has long and extensive experience in exploration, mining and mineral resource estimation of iron ore, base and precious metals. The Competent Person is independent of the issuer.
(iii)	A statement for whom the report was prepared; whether it was intended as a full or partial evaluation or other purpose, work conducted, effective date of report, and remaining work.			<ul style="list-style-type: none"> This Technical Report has been prepared behalf of the Company with effective date February 10, 2026.

1.0. Introduction – General				Back to Table of Contents
	Exploration Results	Mineral Resources	Mineral Reserves	Competent Person’s Report (CPR)
(iv)	Sources of information and data contained in the report or used in its preparation, with citations if applicable, and a list of references.			See APPENDIX 2
(v)	A title page and a table of contents that includes figures and tables.			See Table of Contents
(vi)	An Executive Summary, which briefly summarises important information in the public report, including property description and ownership, geology and mineralisation, the status of exploration, development and operations, Mineral Resource and Mineral Reserve estimates, and the Competent Person's conclusions and recommendations. If Inferred Mineral Resources are used, a summary valuation with and if practical without inclusion of such Inferred Mineral Resources. The Executive Summary should have sufficient detail to allow the reader to understand the essentials of the project.			N/A
(vii)	A declaration from the Competent Person, stating whether “the declaration has been made in terms of the guidelines of the PERC Reporting Standard”.			See the certificate of the Competent Person in APPENDIX 3
(viii)	Diagrams, maps, plans, sections and illustrations, which are dated, legible and prepared at an appropriate scale to distinguish important features. Maps including a legend, author or information source, coordinate system and datum, a scale in bar or grid form, and an arrow indicating north. Reference to a location or index map and more detailed maps showing all important features described in the text, including all relevant cadastral and other infrastructure features.			See APPENDIX 1
(ix)	The units of measure, currency and relevant exchange rates.			• The units of measure are in SI.
(x)	The details of the personal inspection on the property by each Competent Person or, if applicable, the reason why a personal inspection has not been completed.			• The Competent Person has visited the site on several occasions, the most recent being in October 2025, and maintained frequent online communication with the Geology team up to the preparation of Table 1.
1.1. Property Description				
	Exploration Results	Mineral Resources	Mineral Reserves	Competent Person’s Report (CPR)
(i)	Brief description of the scope of project (i.e. whether in preliminary sampling, advanced exploration, scoping, pre-feasibility, or feasibility phase, Life of Mine plan for an ongoing mining operation or closure).			• A Feasibility Study for the project was published in May 2025, with a planned mine opening in 2027.

1.1. Property Description				Back to Table of Contents
	Exploration Results	Mineral Resources	Mineral Reserves	Competent Person's Report (CPR)
(ii)	Describe (noting any conditions that may affect possible prospecting/mining activities) topography, elevation, drainage, fauna and flora, the means and ease of access to the property, the proximity of the property to a population center, and the nature of transport, the climate, known associated climatic risks and the length of the operating season and to the extent relevant to the mineral project, the sufficiency of surface rights for mining operations including the availability and sources of power, water, mining personnel, potential tailings storage areas, potential waste disposal areas, heap leach pad areas, and potential processing plant sites.			<ul style="list-style-type: none"> The location of the mine site, 150 km north of the Arctic Circle and 250 km east of the North Atlantic Sea, strongly affects the climate in the area. February had the lowest temperature down to average -21° C. The warmest month is July, when the temperature normally varies between 9,2° C and 17,6° C. Precipitation is greatest during the summer months with an average precipitation of 94 mm in July, followed by August with 68 mm. Snow and ice cover the landscape from October to May, with a snow depth average of 75 cm. Rapid melting during the spring results in a short and intensive spring flood normally lasting a few weeks in May and June. The average wind speed at Kiruna Airport measuring station is 3,5 m/s and the dominant wind direction is from the south to south-west. Mining in subarctic conditions means climatic risk to machinery and labour force, but 100 years of mining tradition in the area has developed modern technology and work methods that are very well adapted to the environmental conditions. Water supply and mine drainage systems must be adapted to arctic dry periods during winter and high flows during late spring and summer, to support process- and drilling water. (Viscaria Kiruna AB, 2025a) Viscaria Kiruna AB has built a new bridge and road to the area to support the establishment of the mine. The location of the mine near LKAB Kiirunavaara ensures that the local infrastructure and workforce are well adapted to underground mining.
(iii)	Specify the details of the personal inspection on the property by each CP or, if applicable, the reason why a personal inspection has not been completed.			<ul style="list-style-type: none"> The Competent Person has visited the site, inspected drill core and discussed the new discoveries with the geologists on several occasions, latest in October of 2025. Between site visits, online technical review sessions are conducted at intervals to monitor ongoing exploration activities and maintain continuity of technical oversight.

1.2. Location				Back to Table of Contents
	Exploration Results	Mineral Resources	Mineral Reserves	Competent Person's Report (CPR)
(i)	Describe (noting any conditions that may affect possible prospecting/mining activities) topography, elevation, drainage, fauna and flora, the means and ease of access to the property, the proximity of the property to a population center, and the nature of transport, the climate, known associated climatic risks and the length of the operating season and to the extent relevant to the mineral project, the sufficiency of surface rights for mining operations including the availability and sources of power, water, mining personnel, potential tailings storage areas, potential waste disposal areas, heap leach pad areas, and potential processing plant sites.			<ul style="list-style-type: none"> The A, B, D and ABBA zones of the Viscaria Copper Project (the Project) are located in Kiruna Municipality in Norrbotten County, the northernmost county in Sweden. The project lies approximately 5 km northwest of the town of Kiruna. The project is located 270 km north-northwest of the port city of Luleå, which lies on the Gulf of Bothnia in the northern Baltic Sea, and 130 km southeast of the port city of Narvik in northern Norway. (Viscaria Kiruna AB, 2025a) The coordinate system used in the Project is SWEREF 99 20 15.
(ii)	Country Profile: describe information pertaining to the project host country that is pertinent to the project, including relevant applicable legislation, environmental and social context etc. Assess, at a high level, relevant technical, environmental, social, economic, political and other key risks.			<ul style="list-style-type: none"> Information pertaining to the project host country, including applicable legislation, environmental and social context, and other relevant factors can be found in Viscaria Kiruna AB, 2025b.
(iii)	Provide a general topocadastral map	Provide a topo-cadastral map in sufficient detail to support the assessment of eventual economics. State the known associated climatic risks.	Provide a detailed topo-cadastral map. Confirm that applicable aerial surveys have been checked with ground controls and surveys, particularly in areas of rugged terrain, dense vegetation or high altitude.	See Figure 2
1.3. Adjacent Properties				
	Exploration Results	Mineral Resources	Mineral Reserves	Competent Person's Report (CPR)
(i)	Discuss details of relevant adjacent properties. If adjacent or nearby properties have an important bearing on the report, then their location and common mineralized structures should be included on the maps. Reference all information used from other sources.			N/A

1.4. History				Back to Table of Contents
	Exploration Results	Mineral Resources	Mineral Reserves	Competent Person's Report (CPR)
(i)	State historical background to the project and adjacent areas concerned, including known results of previous exploration and mining activities (type, amount, quantity and development work), previous ownership and changes thereto.			<ul style="list-style-type: none"> • There has been very limited mining in the B Zone and no mining in the D Zone. Hence there is no reconciliation information available for these zones. • In the A zone, 12,5 Mt at 2,3% copper was mined between 1982-1997. Experience from past mining operations improves the technical knowledge used to plan future mining. The old Viscaria mine was opened and initially operated by LKAB. The mine was later run by Outokumpu, before being closed in 1997 due to declining copper prices. • In the 2000s rising copper prices led to renewed interest in the property and exploration was undertaken by Avalon Minerals. • In 2019 the Project was acquired by Gruvaktiebolaget Viscaria (then Copperstone Resources AB). (Viscaria Kiruna AB, 2025a)
(ii)	Present details of previous successes or failures with reasons why the project may now be considered potentially economic.			<ul style="list-style-type: none"> • The previous mine closed due to declining copper prices. Copper prices are now much higher and projected to remain high.
(iii)		Discuss known or existing historical Mineral Resource estimates and performance statistics on actual production for past and current operations.		N/A
(iv)			Discuss known or existing historical Mineral Reserve estimates and performance statistics on actual production for past and current operations.	N/A

1.5. Legal Aspects and Permitting				Back to Table of Contents
	Exploration Results	Mineral Resources	Mineral Reserves	Competent Person's Report (CPR)
(i)	A statement from the Competent Person on the confirmation of the legal tenure, including a description of (the following):			<ul style="list-style-type: none">The Competent Person has verified the company's tenure in the publicly available database at the Inspector of Mines office.
(ii)	Discuss the nature of the issuer's rights (e.g. prospecting and/or mining) and the right to use the surface of the properties to which these rights relate. Disclose the date of expiry and other relevant details.			<ul style="list-style-type: none">Viscaria Kiruna AB has three granted exploitation concessions under the Minerals Act (SFS1991: 45); Viscaria K no 3 and K no 4 which were granted by Bergsstaten (Mining Inspectorate) in January 2012, both expiring 2037, and Viscaria K no 7 which was granted in March 2018, expiring 2043.The exploration results presented are from drilling within or directly adjacent to these concessions. If mining, development for mining or other significant work to continue extraction are on-going at the time of expiry, the concessions will automatically be extended for a 10-year period.The area around the deposit has a detailed plan for mining operations and is designated as an area of national interest for deposits of valuable minerals or materials that are of great importance for the country's supply readiness. (Viscaria Kiruna AB, 2025b) Viscaria Kiruna AB also has 11 exploration licenses surrounding the exploitation concessions. Details for all concessions and licenses can be found at https://www.viscaria.com/en/
(iii)	Present the principal terms and conditions of all existing agreements, and details of those still to be obtained, (such as, but not limited to, concessions, partnerships, joint ventures, access rights, leases, historical and cultural sites, wilderness or national park and environmental settings, royalties, consents, permission, permits or authorisations).			See the company's tenures at http://www.viscaria.com/en/
(iv)	Present the security of the tenure held at the time of reporting or that is reasonably expected to be granted in the future along with any known impediments to obtaining the right to operate in the area. State details of applications that have been made. See Clause 8.1 for declaration of a Mineral Reserve.			See the company's tenures at http://www.viscaria.com/en/
(v)	Provide a statement of any legal proceedings for example; land claims, that may have an influence on the rights to prospect or mine for minerals, or an appropriate negative statement.			See the company's tenures at http://www.viscaria.com/en/

1.5. Legal Aspects and Permitting				Back to Table of Contents
	Exploration Results	Mineral Resources	Mineral Reserves	Competent Person's Report (CPR)
(vi)	Provide a statement relating to governmental/statutory requirements and permits as may be required, have been applied for, approved or can be reasonably be expected to be obtained. Provide a review of risks that permits will not be received as expected and impact of delays to the project.			<ul style="list-style-type: none">The final environmental permit for mining was approved in April 2025. All public information on the permitting process can be found on the company webpage http://www.viscaria.com/en/
1.6. Royalties				
	Exploration Results	Mineral Resources	Mineral Reserves	Competent Person's Report (CPR)
(i)	Describe the royalties that are payable in respect of each property.			<ul style="list-style-type: none">Pursuant to Swedish law, a mineral royalty of 0.2% of the value of ROM is payable. This comprises 0.05% to the state and 0.15% to landowners (private landowners own a small part of property inside the land lease). The royalty cost is estimated to be around US\$ 500,000 per annum (net cost).VISCARIA is a party to two of so-called Net Smelter Return ("NSR") royalty agreements, entered into in February 2008 in connection with Copperstone Viscaria's (with a different governance regime and under another company name) acquisition the Viscaria asset. The agreements entails a certain industry specific royalty obligation, originally for the benefit of two different previous owners of this mine asset, of which the larger royalty right of 1.0 % has been transferred to EMX Corp ("EMX"), that inter alia, administer NSR-rights professionally, while the smaller royalty right of 0.5 %, although capped at MUSD 12, has been transferred to Outokumpu Oyj ("Outokumpu"), parent company to the Swedish subsidiary that managed and subsequently closed the previous mine. The payment of the smaller royalty is deductible from the larger royalty, meaning that the royalty obligation shall not exceed 1.0 % of the net sales revenue.VISCARIA and Laevas Sami village have entered a cooperation agreement to enhance both mining operations and reindeer husbandry in the Viscaria area. As part of the agreement, the parties have agreed on the compensation to be paid for the impact of the mining operations on the reindeer husbandry.

1.7. Liabilities				Back to Table of Contents
	Exploration Results	Mineral Resources	Mineral Reserves	Competent Person's Report (CPR)
(i)	Describe any liabilities, including rehabilitation guarantees that are pertinent to the project. Provide a description of the rehabilitation liability, including, but not limited to, legislative requirements, assumptions and limitations.			<ul style="list-style-type: none"> The mine area will have to be rehabilitated when operations cease. As a security a bond of 344 MSEK will be deposited with the Norrbotten County Administrative Board. In the first phase a 60.6 MSEK bond was deposited in order to guarantee rehabilitation of the initial mine drainage and the water treatment plant.

Section 2 Geological Setting, Deposit, Mineralisation

2.1. Geological Setting, Deposit Type and Mineralisation Style				Back to Table of Contents
	Exploration Results	Mineral Resources	Mineral Reserves	Competent Person's Report (CPR)
(i)	Describe the regional geology.			<ul style="list-style-type: none"> The Viscaria Cu project is located in the center of the Kiruna mining district, which consists of a Paleoproterozoic (2.5 – 1.8 Ga) supracrustal sequence, including clastic sedimentary rocks together with basic and intermediate to acid felsic volcanic rocks. The Paleoproterozoic Karelian Suite was formed during a continental rifting event between 2.5 Ga and 2.0 Ga, and consists of metamorphosed volcanic, volcano-sedimentary, and sedimentary rocks. In the Kiruna area, the lowermost unit of the Karelian Suite is the Kovo Group, which is comprised of quartzite and meta-conglomerate, overlain by the Kiruna Greenstone Group. The Kiruna Greenstone Group is the host group of the Viscaria and Pahtohavare deposits. It consists of a 2 to 4 km thick sequence of submarine and subaerial basalts, andesites, volcanoclastic rocks, turbidites and chemical sedimentary rocks, which were formed between 2.2 Ga and 2.0 Ga. Several of the sedimentary formations can be easily traced along 10 km length on the Kiruna district. The whole sequence is affected by extensional tectonics and igneous sill emplacements. Around 2.0 Ga, there was a shift from extensional to compressional tectonics, marked by the onset of the Svecokarelian orogeny (1.96 Ga to 1.75 Ga). The Kurravaara Conglomerate Formation unconformably overlies the Kiruna Greenstone Group. The Svecofennian Suite is a supracrustal sequence represented by arc-related volcanic and sedimentary rocks that include the Porphyrite Group, the Porphyry Group, and the Hauki Quartzite, arranged from oldest to youngest, respectively. The volcanic rocks of the Porphyry Group host economically important IOA's, such as the Kiirunavaara and the Per Geijer deposits.
(ii)	Describe the project geology including mineral deposit type, geological setting and style of mineralisation.			<ul style="list-style-type: none"> The Kiruna Greenstone Group was deposited on a continental rift setting and exhibits an evolution from within-plate to mid-ocean-ridge-type volcanism. The group has been divided into six formations based on petrographic and geochemical criteria. <p style="text-align: right;"><i>(Continued on next page)</i></p>

2.1. Geological Setting, Deposit Type and Mineralisation Style				Back to Table of Contents
	Exploration Results	Mineral Resources	Mineral Reserves	Competent Person's Report (CPR)
(ii)	Describe the project geology including mineral deposit type, geological setting and style of mineralisation.			<p>The bottom of the group is dominated by basaltic lavas, dolerite and locally conglomerates (Såkevaratjah Formation). This is subsequently overlain by peridotitic to basaltic komatiites of the Ädnamvare Formation, followed by the subaqueous-subaerial tholeiitic basalts of the Pikse Formation.</p> <ul style="list-style-type: none"> • The district spans around 150 km by 20 km, hosting Kiruna-type Iron Oxide Apatite (IOA) deposits, including Kiirunavaara - the world's largest underground iron ore mine, Malmberget, Gruvberget, Tuolluvaara, and the Per Geijer deposits. • The Viscaria Formation, the host formation of the Viscaria Cu-Fe orebodies, is composed of a steeply SE-dipping, NE-SW-striking sequence of volcanoclastic, chemical and organic sedimentary rocks. Overlying the Viscaria Formation is the Peuravaara Formation, composed of basaltic pillow lavas. The whole sequence has been metamorphosed in upper greenschist to lower amphibolite facies. The hydrothermal alteration spans over 20 km², and includes district-wide sodic alteration, followed by widespread Fe-K-Ca±Mg metasomatism, marked by biotite, K-feldspar, amphibole, and magnetite alterations. • The Viscaria deposit is situated within the now inverted former rift basin of the crust within the northern Norrbotten area. E-W late-orogenic crustal shortening formed major regional folds and penetrative regional steeply dipping N-S foliation. This N-S structural pattern controls inflections, steps and terminations in the Viscaria Formation. The complex evolution resulted in a SE-dipping, NE-SW-striking stratigraphy younging to the east. • At Viscaria, the rheological heterogeneity of the rock units has led to strain partitioning, resulting in localized bedding-parallel shear/fault zones close to major rheological contacts and intraformational folding with meter scale parasitic folds normally observed within mechanically weaker rocks; marble, talc schists and graphite schists. • The rocks show steep to locally overturned dips close to the surface while the dips become gentler towards the depth. <p><i>(Continued on next page)</i></p>

2.1. Geological Setting, Deposit Type and Mineralisation Style				Back to Table of Contents
	Exploration Results	Mineral Resources	Mineral Reserves	Competent Person's Report (CPR)
(ii)	Describe the project geology including mineral deposit type, geological setting and style of mineralisation.			<ul style="list-style-type: none"> The stratigraphy is overprinted by steeply dipping reverse faults with west side up kinematics and intraformational folds moderately plunging to the S and SW. Viscaria is a copper sulfide deposit with chalcopyrite as the main copper mineral. In the D Zone, Cu sulfides are linked to the replacement of pyrite along magnetite grain margins. Rare replacement of bornite in chalcopyrite also occurs. In the A and B Zones, Cu sulfides are paragenetically associated with pyrrhotite and pyrite which replace magnetite.
(iii)	Discuss the geological model or concepts being applied in the investigation and on the basis of which the exploration program is planned. Describe the inferences made from this model.			<ul style="list-style-type: none"> The geological model at Viscaria comprises stratabound mineralized zones. An exploration campaign commenced in mid-2024 to test the strike and depth extensions of these known mineralized zones beyond the established Mineral Resources. Results from that 2024 exploration program were incorporated into the feasibility study and resource update published in May 2025 (available at http://www.viscaria.com/en/). The drillholes reported here were planned based on the outcomes of the 2024 and early 2025 exploration results and are designed to further delineate the extent and continuity of mineralization identified during that phase.
(iv)	Discuss data density, distribution and reliability and whether the quality and quantity of information are sufficient to support statements, made or inferred, concerning the project.			<ul style="list-style-type: none"> All drillholes reported have intersected the mineralization and have been geologically logged in detail by the site geological team. However, analytical assay results for drillholes VDD24036 and VDD25013D are still pending. Consequently, while the geological information confirms the presence of mineralized zones and supports preliminary geological interpretations, the quantitative data required to assess grade continuity and mineral content are not yet available for this hole. At this stage, the quality and quantity of information are considered sufficient to confirm the presence and extent of mineralization, but not yet adequate to support any inferences regarding grade distribution or resource estimation.

2.1. Geological Setting, Deposit Type and Mineralisation Style				Back to Table of Contents
	Exploration Results	Mineral Resources	Mineral Reserves	Competent Person's Report (CPR)
(v)	Discuss the significant minerals present in the deposit, their frequency, size and other characteristics. These include minor and gangue minerals where these will have an effect on the processing steps. Indicate the variability of each important mineral within the mineral deposit.			<ul style="list-style-type: none"> Mineralogy of the Viscaria Deposit is described in Table 1 for Mineral Resource Update May 2025 (Viscaria Kiruna AB, 2025b). Other recent articles regarding mineral characterization can be found in Imana et al., 2023 and Tasbicen et al., 2023.
(vi)	Describe the significant mineralised zones encountered on the property, including a summary of the surrounding rock types, relevant geological controls, and the length, width, depth, and continuity of the mineralisation, together with a description of the type, character, and distribution of the mineralisation			<ul style="list-style-type: none"> The property hosts four principal mineralised zones: A, B, ABBA, and D. The drillhole under review intersected the B Zone, which is hosted predominantly in biotite-altered calcsilicate units. The B Zone mineralisation is characterized by copper sulphide dissemination and veining, commonly occurring in bed-parallel and cross-cutting orientations, consistent with previously logged observations in the area (Viscaria Kiruna AB, 2025a, 2025b). In contrast, the A Zone exhibits similar structural controls but contains a carbonaceous graphitic ore type, while the D Zone is hosted within a thick carbonate unit (>15 m) showing magnetite-chalcopryrite replacement along both margins, with localized talc and amphibole associated with lower Cu grades. D Zone has elevated Fe oxide content (22–26% of Fe hosted in magnetite) with chalcopryrite and pyrite replacing magnetite grain boundaries, and peripheral areas containing sparse pyrite replacement and a low-Cu specular hematite zone near the tectonic footwall of the marble unit. Both A and B Zone orebodies are generally harder and more competent than the carbonate- and magnetite-rich D Zone. ABBA Zone is positioned between the A and B Zones, in the southwestern portion of the deposit, and consists of high-grade copper mineralisation with a lower grade envelope, hosted within volcano-sedimentary rocks.

Section 3 Exploration and Drilling, Sampling Techniques and Data				
3.1. Exploration			Back to Table of Contents	
	Exploration Results	Mineral Resources	Mineral Reserves	Competent Person's Report (CPR)
(i)	Describe the data acquisition or exploration techniques and the nature, level of detail, and confidence in the geological data used (i.e. geological observations, remote sensing results, stratigraphy, lithology, structure, alteration, mineralisation, hydrology, geophysical, geochemical, petrography, mineralogy, geochronology, bulk density, potential deleterious or contaminating substances, geotechnical and rock characteristics, moisture content, bulk samples etc.). Confirm that data sets include all relevant metadata, such as unique sample number, sample mass, collection date, spatial location etc.			<ul style="list-style-type: none"> The geological data for the project have been acquired through standard exploration techniques, including detailed core logging of lithology, structure, alteration, and mineralisation, as well as field observations of host rock characteristics. Core samples have been collected systematically, with unique sample numbers, collection dates, sample mass, and spatial location recorded for each. Additional geological data such as bulk density, geotechnical and rock characteristics, and moisture content have been noted where relevant. Sample preparation and assaying have been performed at ALS Geochemistry laboratories in Piteå. Details of the assay process are listed in section 3.3.
(ii)	Identify and comment on the primary data elements (observation and measurements) used for the project and describe the management and verification of these data or the database. This should describe the following relevant processes: acquisition (capture or transfer), validation, integration, control, storage, retrieval and backup processes. It is assumed that data are stored digitally but hand-printed tables with well-organized data and information may also constitute a database.			<ul style="list-style-type: none"> A custom SQL database from M-Solutions Oy is used, called M-IDIS® Industry Data Integration System. The database downloads assay results directly from the laboratory ALS's (see Section 3.4.(i)) cloud-based database Webtrieve. Database is backed up daily.
(iii)	Acknowledge and appraise data from other parties and reference all data and information used from other sources.			See APPENDIX 3 for references.
(iv)	Clearly distinguish between data / information from the property under discussion and that derived from surrounding properties			N/A
(v)	Describe the survey methods, techniques and expected accuracy of data, including the methods for downhole surveying of drillholes. Specify the grid system used.			<ul style="list-style-type: none"> A gyroscope sensor (SPT GyroMaster) is used for downhole surveying. Surveys are completed by trained drilling contractors and requested by Viscaria geologists. The grid system used is SWEREF 99 20 15.

3.1. Exploration				Back to Table of Contents
	Exploration Results	Mineral Resources	Mineral Reserves	Competent Person's Report (CPR)
(vi)	Discuss whether the data spacing and distribution is sufficient to establish the degree of geological and grade continuity appropriate for the estimation procedure(s) and classifications applied.			<ul style="list-style-type: none">Drillhole spacing supports promising geological interpretations of the B Zone and D Zone. Assays are pending for VDD24036 and VDD25013D, so grade continuity cannot yet be confirmed, and Mineral Resource Estimation or classification is not yet applicable.
(vii)	Present representative models and / or maps and cross sections or other two- or three-dimensional illustrations of results, showing location of samples, accurate drill-hole collar positions, down-hole surveys, exploration pits, underground workings, relevant geological data, etc.			<ul style="list-style-type: none">See APPENDIX 1 for figures
(viii)	Report the relationships between mineralisation widths and intercept lengths are particularly important, the geometry of the mineralisation with respect to the drill hole angle. If it is not known and only the down-hole lengths are reported, confirm it with a clear statement to this effect (e.g. down-hole length, true width not known').			<ul style="list-style-type: none">At this stage, only down-hole lengths have been recorded. True widths of the mineralisation with respect to the drillhole angle are not yet determined, as assay results and further structural interpretation are pending.
3.2. Drilling Techniques				
	Exploration Results	Mineral Resources	Mineral Reserves	Competent Person's Report (CPR)
(i)	Present the type of drilling undertaken (e.g. core, reverse circulation, open-hole hammer, rotary air blast, auger, Banka, sonic, etc.) and details (e.g. core diameter, triple or standard tube, depth of diamond tails, face-sampling bit or other type, whether core is oriented and if so, by what method, etc.).			<ul style="list-style-type: none">All drilling undertaken is standard tube diamond drilling. Cores are NQ2 size (50 mm diameter, measured with calipers regularly during logging). Directional drilling has been used to ensure drilling hits the planned targets. Directional drilling core has a diameter of 40.7 mm. All core, excluding sections where directional drilling is done, is oriented by the drillers where possible.
(ii)	Describe whether core and chip samples have been geologically and geotechnically logged to a level of detail to support appropriate Mineral Resource estimation, technical studies, mining studies and metallurgical studies.			N/A
(iii)	Describe whether logging is qualitative or quantitative in nature; indicate if core photography. (or costean, channel, etc.) was undertaken			<ul style="list-style-type: none">Logging is qualitative. All cores are photographed dry and wet.
(iv)	Present the total length and percentage of the relevant intersections logged.			<ul style="list-style-type: none">Geological and geotechnical logging has been completed for 3907.7 meters of drillcore (VDD25013B, VDD25013C, VDD25001B). Of these, 1396 meters have undergone geochemical sampling. See Appendix 2 for full sample lists and weighted average grades for significant intercepts.

3.2. Drilling Techniques				Back to Table of Contents
	Exploration Results	Mineral Resources	Mineral Reserves	Competent Person's Report (CPR)
(v)	Discuss the results of any downhole surveys of the drill holes.			<ul style="list-style-type: none">Deviation surveys are regularly carried out during drilling and at the end of hole to monitor the drilling trajectory.BHEM surveys are also routinely conducted as part of the exploration program. Results were used to plan further drilling.
3.3. Sample Method, Collection, Capture, and Storage				
	Exploration Results	Mineral Resources	Mineral Reserves	Competent Person's Report (CPR)
(i)	Describe the nature and quality of sampling (e.g. cut channels, random chips, or specific specialised industry standard measurement tools appropriate to the minerals under investigation, such as down hole gamma sondes, or handheld XRF instruments, etc.). These examples should not be taken as limiting the broad meaning of sampling.			<ul style="list-style-type: none">Drillhole cut channels are used. Handheld XRF instruments were occasionally used to assist in preliminary estimation of Cu content or to identify minerals.
(ii)	Describe the sampling processes, including sub-sampling stages to maximize representivity of samples. This should include whether sample sizes are appropriate to the grain size of the material being sampled. Indicate whether sample compositing has been applied.			<ul style="list-style-type: none">For sampling process, see Section 3.4.(iii)Sample compositing has not been applied.
(iii)	Appropriately describe each data set (e.g. geology, grade, density, quality, diamond breakage, geo-metallurgical characteristics etc.), sample type, sample-size selection and collection methods			<ul style="list-style-type: none">For grade samples, see Section 3.4.(iii)For density samples, see Sections 3.7.(i) and 3.7.(iv)
(iv)	Report the geometry of the mineralisation with respect to the drill-hole angle. State whether the orientation of sampling achieves unbiased sampling of possible structures and the extent to which this is known, considering the Mineral deposit type. State if the intersection angle is not known and only the downhole lengths are reported.			<ul style="list-style-type: none">Drillhole is designed to intersect with a perpendicular angle and usually southeast-dipping mineralization. Where drillcore is oblique to mineralisation orientation, cutting line was used to ensure a more representative sample.
(v)	Describe retention policy and storage of physical samples (e.g. core, sample reject, etc.)			<ul style="list-style-type: none">All core (sampled and non-sampled) will be placed in a storage tent. Pulps and rejects will be returned from lab and will be stored in library at the Core Shed.
(vi)	Describe the method of recording and assessing core and chip sample recoveries and results assessed, measures taken to maximise sample recovery and ensure representative nature of the samples and whether a relationship exists between sample recovery and grade and whether sample bias may have occurred due to preferential loss/gain of fine/coarse material.			<ul style="list-style-type: none">Total Core Recovery (TCR) and Rock Quality Designation (RQD) are measured for all cores. Drillers report core loss measured after every run. Drillers reports are compared to TCR. Where core loss (according to TCR) exceeds 0.3 m sample intervals are not extended across the incomplete section.
<i>(Continued on next page)</i>				

(Continued on next page)

3.3. Sample Method, Collection, Capture, and Storage				Back to Table of Contents
	Exploration Results	Mineral Resources	Mineral Reserves	Competent Person's Report (CPR)
(vi)	Describe the method of recording and assessing core and chip sample recoveries and results assessed, measures taken to maximise sample recovery and ensure representative nature of the samples and whether a relationship exists between sample recovery and grade and whether sample bias may have occurred due to preferential loss/gain of fine/coarse material.			<ul style="list-style-type: none">Where core cannot be assayed, results are diluted with 0 grade material in grade calculations. As such, where grade is reported across an interval with core loss, Cu and Fe content is underestimated. Core loss in the reported intersections is minimal.
(vii)	If a drill-core sample is taken, state whether it was split or sawn and whether quarter, half or full core was submitted for analysis. If a non-core sample, state whether the sample was riffled, tube sampled, rotary split etc. and whether it was sampled wet or dry. The impact of water table or flow rates on recovery and introduction of sampling biases or contamination from above. Discuss the impact of variable hole diameters, e.g., by the use of a caliper tool.			<ul style="list-style-type: none">Core is sawn and half core is analysed. Hole diameter is very consistent.
(viii)	If a drill-core sample is taken, sufficient information should be supplied to assess the effects of core loss. Occasionally, only total core recovery is mentioned but at the same time the mineralized parts are designated as poor quality. This type of reporting is against the main principles of Transparency and Materiality. Heavy core losses throughout an ore body intersection can seriously undermine the confidence in a resource estimate. It is important to determine whether a relationship exists between grade and recovery (either positive or negative) to assess the potential for grade bias. In addition, it is important to state the method used to determine the core recovery: Total Core Recovery (TCR), Solid Core Recovery (SCR) and Rock Quality Designation (RQD).			Core recovery is determined using TCR. TCR and RQD are collected for the full drillhole. Average recovery of the three logged drillholes was 99%. Average RQD was 85%. For handling of core loss, see Section 3.3.(vi)
3.4. Sample Preparation and Analysis				
	Exploration Results	Mineral Resources	Mineral Reserves	Competent Person's Report (CPR)
(i)	Identify the laboratory(s) and state the accreditation status and Registration Number of the laboratory or provide a statement that the laboratories are not accredited. Record the steps taken by the Competent Person to ensure the results from a non-accredited laboratory are of an acceptable quality.			<ul style="list-style-type: none">The accredited laboratories ALS Geochemistry – Piteå (SWE) perform the sample preparation and assaying.

3.4. Sample Preparation and Analysis				Back to Table of Contents
	Exploration Results	Mineral Resources	Mineral Reserves	Competent Person's Report (CPR)
(ii)	Identify the analytical method. Discuss the nature, quality and appropriateness of the assaying and laboratory processes and procedures used and whether the technique is considered partial or total.			<ul style="list-style-type: none">• Multielement method ME-MS61 has been utilized. It is considered appropriate for the mineralisation at Viscaria.
(iii)	Describe the process and method used for sample preparation, sub-sampling and size reduction, and the likelihood of inadequate or non-representative samples (i.e. improper size reduction, contamination, screen sizes, granulometry, mass balance, etc.)			<ul style="list-style-type: none">• Sample interval boundaries are marked by geologists. Cores are then transported via courier to ALS, Piteå using Chain of Custody procedure. Diamond drill core is sawn longitudinally and split in half for sampling. Sample preparation procedures are appropriate, with ALS preparing samples by crushing to <2 mm, splitting using a riffle splitter, the pulverizing to achieve a 250 g sample mass that is sub-sampled for analysis. Sample sizes have varied according to the length of core sample taken as determined by geological logging. Sample lengths are appropriate for the intersected mineralization and minimum core diameters are greater than the maximum mineralisation crystal size. Pulverizing of crush materials is acceptable under the quality standard by ALS. ALS ships the sampled half-core, pulp and reject material via courier to Viscaria Kiruna AB, where pulps are stored in a dry and heated library and the half-core and rejects are stored in cold facilities for later use and/or review. (Viscaria AB, 2025b)
3.5. Sampling Governance				
	Exploration Results	Mineral Resources	Mineral Reserves	Competent Person's Report (CPR)
(i)	Discuss the governance of the sampling campaign and process, to ensure quality and representivity of samples and data, such as sample recovery, high grading, selective losses or contamination, core/hole diameter, internal and external QA/QC, and any other factors that may have resulted in or identified sample bias.			<ul style="list-style-type: none">• The sampling campaign has been conducted under standard site procedures to ensure representivity and data integrity. Core recovery was monitored throughout drilling, and no significant loss or high grading was observed during logging. Core diameter and condition were recorded to maintain consistency in sampling.• Internal QA/QC measures, including duplicate sampling and systematic logging, have been applied. External QA/QC protocols will be implemented once samples are submitted for assay. QA/QC validation is not yet complete for drillholes with assays pending. However, the procedures followed provide confidence that the collected geological data accurately represent the mineralisation style and host lithologies.

3.5. Sampling Governance				Back to Table of Contents
	Exploration Results	Mineral Resources	Mineral Reserves	Competent Person's Report (CPR)
(ii)	Describe the measures taken to ensure sample security and the Chain of Custody.			• Measures described by Viscaria Kiruna AB, 2025a and 2025b.
(iii)	Describe the validation procedures used to ensure the integrity of the data, e.g. transcription, input or other errors, between its initial collection and its future use for modelling (e.g. geology, grade, density, etc.)			• Geological data collected from the drillholes have been validated through systematic core logging and field checks to ensure accuracy and completeness. Unique sample numbers, collection dates, spatial locations, and sample masses have been recorded to maintain traceability. Data entry into databases is conducted following standard procedures, with checks to minimize transcription or input errors. Assay results are pending, and once received, they will undergo standard QA/QC validation, including verification against duplicates, standards, and blanks, to ensure integrity prior to use in modelling for geology, grade, or density.
(iv)	Describe the audit process and frequency (including dates of these audits) and disclose any material risks identified.			• Regular internal audits are performed by the Viscaria geology team.
3.6. Quality Control/Quality Assurance				
	Exploration Results	Mineral Resources	Mineral Reserves	Competent Person's Report (CPR)
(i)	Demonstrate that adequate field sampling process verification techniques (QA/QC) have been applied, e.g. the level of duplicates, blanks, reference material standards, process audits, analysis, etc. If indirect methods of measurement were used (e.g. geophysical methods), these should be described, with attention given to the confidence of interpretation. Refer to measures taken to ensure sample representivity and the appropriate calibration of any measurement tools or systems used. QA/QC procedures used to check databases augmented with 'new' data have not resulted in corruption of previous versions containing stored 'old' data.			• Duplicates (crush and field), blanks and standards are inserted into sample program at a frequency of minimum 1 duplicate/blank/standards per 10 samples.
(ii)	Document the use of any independent check laboratory (umpire check samples). Identify the independent laboratory and details of its accreditation.			• No umpire check has been used for the results reported here.
3.7. Bulk Density				
	Exploration Results	Mineral Resources	Mineral Reserves	Competent Person's Report (CPR)
(i)	Describe the method of bulk density determination with reference to the frequency of measurements, the size, nature and representativeness of the samples.			• Density measurements are made on whole core, with buoyancy method, before core is sent to the lab. (Continued on next page)

3.7. Bulk Density				Back to Table of Contents
	Exploration Results	Mineral Resources	Mineral Reserves	Competent Person's Report (CPR)
(i)	Describe the method of bulk density determination with reference to the frequency of measurements, the size, nature and representativeness of the samples.			<ul style="list-style-type: none">Density measurements are focused in sampled intervals, with representative samples in non-sampled intervals. Measured core pieces were between 10 and 30 cm. Measured bulk density ranges from 2.89 to 3.25 g/cm³ (P10–P90), with a median of 3.03 g/cm³. The full dataset ranges from 2.4 to 4.74 g/cm³, with values outside the P10–P90 range representing localized zones of high-grade massive sulphide mineralization (upper outliers) or weathered/fractured/porous intervals (lower outliers).
(ii)	If target tonnage ranges are reported state the preliminary estimates or basis of assumptions made for bulk density.			N/A
(iii)	Discuss the representivity of bulk density samples of the material for which a grade range is reported.			N/A
(iv)	Discuss the adequacy of the methods of bulk density determination for bulk material with special reference to accounting for void spaces (vugs, porosity etc.), moisture and differences between rock and alteration zones within the mineral deposit.			<ul style="list-style-type: none">Porous and/or clay-rich rock are avoided as the measurement method is not accurate for these rocks. Very low density measurements (≤ 2.6 g/cm³) are likely due to porosity not visible to the technician.
3.8. Bulk-Sampling and/or Trial-mining				
	Exploration Results	Mineral Resources	Mineral Reserves	Competent Person's Report (CPR)
(i)	Indicate the location of individual samples (including map).			N/A
(ii)	Describe the size of samples, spacing/density of samples recovered and whether sample sizes and distribution are appropriate to the grain size of the material being sampled.			N/A
(iii)	Describe the method of mining and treatment.			N/A
(iv)	Indicate the degree to which the samples are representative of the various types and styles of mineralisation and the mineral deposit as a whole.			N/A

Section 4 Estimation and Reporting of Exploration Results, Mineral Resources and Mineral Reserves				
4.1. Geological model and interpretation			Back to Table of Contents	
	Exploration Results	Mineral Resources	Mineral Reserves	Competent Person's Report (CPR)
(i)	Describe the geological model, construction technique and assumptions that form the basis for the Exploration Results or Mineral Resource estimate. Discuss the sufficiency of data density to assure continuity of mineralisation and geology and provide an adequate basis for the estimation and classification procedures applied.			<ul style="list-style-type: none"> Resource models are published in 2025, See http://www.viscaria.com/en/ No estimation or classification is reported here.
(ii)	Describe the nature, detail and reliability of geological information with which lithological, structural, mineralogical, alteration or other geological, geotechnical and geo-metallurgical characteristics were recorded.			<ul style="list-style-type: none"> Geological logging is qualitative, performed by Viscaria geologists as well as skilled contractors. Details of data collection are described in Section 3: Exploration and Drilling, Sampling Techniques and Data.
(iii)	Describe any obvious geological, mining, metallurgical, environmental, social, infrastructural, legal and economic factors that could have a significant effect on the prospects of any possible exploration target or mineral deposit.			<ul style="list-style-type: none"> The report covers near-mine exploration, inside or directly adjacent to existing exploitation concessions. There are no factors specific to these findings.
(iv)		Discuss all known geological data that could materially influence the estimated quantity and quality of the Mineral Resource.		N/A
(v)		Discuss whether consideration was given to alternative interpretations or models and their possible effect (or potential risk) if any, on the Mineral Resource estimate.		N/A
(vi)		Discuss geological discounts (e.g. magnitude, per reef, domain, etc.), applied in the model, whether applied to mineralized and / or un-mineralized material (e.g. potholes, faults, dykes, etc.).		N/A

4.2. Estimation and modelling techniques				Back to Table of Contents
	Exploration Results	Mineral Resources	Mineral Reserves	Competent Person's Report (CPR)
(i)	Describe in detail the estimation techniques and assumptions used to determine the grade and tonnage ranges for any Exploration Targets, if reported in a Public Report.			N/A
(ii)		Discuss the nature and appropriateness of the estimation technique(s) applied and key assumptions, including treatment of extreme grade values (cutting or capping), compositing (including by length and/or density), domaining, sample spacing, estimation unit size (block size), selective mining units, interpolation parameters and maximum distance of extrapolation from data points.		N/A
(iii)		Describe assumptions and justification of correlations made between variables.		N/A
(iv)		Provide details of any relevant specialized computer program (software) used, with the version number, together with the estimation parameters used.		N/A
(v)		State the processes of checking and validation, the comparison of model information to sample data and use of reconciliation data, and whether the Mineral Resource estimate takes account of such information.		N/A
(vi)		Describe the assumptions made regarding the estimation of any co-products, by-products or deleterious elements.		N/A

4.3. Reasonable prospects for eventual economic extraction				Back to Table of Contents
	Exploration Results	Mineral Resources	Mineral Reserves	Competent Person's Report (CPR)
(i)		Disclose and discuss the geological parameters. These would include (but not be limited to) volume / tonnage, grade and value / quality estimates, cut-off grades, strip ratios, upper- and lower- screen sizes.		N/A
(ii)		Disclose and discuss the engineering parameters. These would include mining methods, dilution, processing, geotechnical, geohydraulic and metallurgical) parameters.		N/A
(iii)		Disclose and discuss the infrastructural including, but not limited to, power, water, site-access.		N/A
(iv)		Disclose and discuss the legal, governmental, permitting, statutory parameters.		N/A
(v)		Disclose and discuss the environmental and social (or community) parameters.		N/A
(vi)		Disclose and discuss the marketing parameters.		N/A
(vii)		Disclose and discuss the economic assumptions and parameters. These factors will include, but not limited to, commodity prices and potential capital and operating costs		N/A
(viii)		Discuss any material risks		N/A
(ix)		Discuss the parameters used to support the concept of "eventual"		N/A
4.4. Classification Criteria				
	Exploration Results	Mineral Resources	Mineral Reserves	Competent Person's Report (CPR)
(i)		Describe criteria and methods used as the basis for the classification of the Mineral Resources into varying confidence categories.		N/A

4.5. Reporting				Back to Table of Contents
	Exploration Results	Mineral Resources	Mineral Reserves	Competent Person's Report (CPR)
(i)	Discuss the reported low and high-grades and widths together with their spatial location to avoid misleading the reporting of Exploration Results, Mineral Resources or Mineral Reserves.			<ul style="list-style-type: none"> Exploration results are reported for VDD25001, VDD25013B, and VDD25013C. Geological logging confirms the presence and style of mineralization in all three holes; however, VDD25013D intersected mineralization based on visual observation; however, assay results for drillholes VDD24036 and VDD25013D remain pending. Consequently, quantitative grade and spatial distribution data for that hole are not yet available.
(ii)	Discuss whether the reported grades in Exploration Targets are regional averages or if they are selected individual samples taken from the property under discussion.			<ul style="list-style-type: none"> No exploration targets are reported.
(iii)	State assumptions regarding mining methods, infrastructure, metallurgy, environmental and social parameters. State and discuss where no mining related assumptions have been made.			<ul style="list-style-type: none"> No mining related assumptions are made in the report.

4.5. Reporting				Back to Table of Contents
	Exploration Results	Mineral Resources	Mineral Reserves	Competent Person's Report (CPR)
(iv)	State the specific quantities and grades / qualities which are being reported in ranges and/or widths, and explain the basis of the reporting			<ul style="list-style-type: none"> • Exploration results are reported for three drillholes (VDD25001, VDD25013B, VDD25013C). • Assay results of VDD25013D are currently pending. No specific quantities, grades, or widths can be reported at this time. Once assay data are received, these values will be included in the next Exploration Results Table 1 to provide ranges and widths based on measured and verified data. • Analytical results for VDD25013B, for which assays were pending at the time of the previous Interim Report Q3 2025, are now available and are presented in Appendix 2. All intervals are reported as downhole lengths.
(v)		Present the details for example open pit, underground, residue stockpile, remnants, tailings, and existing pillars or other sources in the Mineral Resource statement		N/A
(vi)		Present a reconciliation with any previous Mineral Resource estimates. Where appropriate, report and comment on any historical trends (e.g. global bias).		N/A
(vii)		Present the defined reference point for the tonnages and grades reported as Mineral Resources. State the reference point if the point is where the run of mine material is delivered to the processing plant. It is important that, in all situations where the reference point is different, such as for a saleable product, a clarifying statement is included to ensure that the reader is fully informed as to what is being reported.		N/A
(viii)	If the CP is relying on a report, opinion, or statement of another expert who is not a CP, disclose the date, title, and author of the report, opinion, or statement, the qualifications of the other expert and why it is reasonable for the CP to rely on the other expert, any significant risks and any steps the CP took to verify the information provided.			N/A
(ix)	State the basis of equivalent metal formulae, if applied.			N/A

Section 5 Technical Studies

5.1. Introduction				Back to Table of Contents
	Exploration Results	Mineral Resources	Mineral Reserves	Competent Person's Report (CPR)
(i)	Not applicable to Exploration Results	State the level of study – whether Scoping, Pre-Feasibility, Feasibility or ongoing Life of Mine	State the level of study – whether Pre-feasibility, Feasibility or ongoing Life of Mine. The Standard requires that a study to at least a Pre-Feasibility level has been undertaken to convert Mineral Resource to Mineral Reserve. Such studies will have been carried out and will include a mine plan or production schedule that is technically achievable and economically viable, and that all Modifying Factors have been considered.	N/A
(ii)	Not applicable to Exploration Results		Provide a summary table of the Modifying Factors used to convert the Mineral Resource to Mineral Reserve for Pre-feasibility, Feasibility or on-going Life-of-Mine studies.	N/A

5.2. Mining Design				Back to Table of Contents
	Exploration Results	Mineral Resources	Mineral Reserves	Competent Person's Report (CPR)
(i)	not applicable to Exploration Results	State assumptions regarding mining methods and parameters when estimating Mineral Resources or explain where no mining assumptions have been made.		N/A
(ii)	not applicable to Exploration Results	Discuss Modifying factors taken into account in estimation of Mineral Resources	State and justify all modifying factors and assumptions made regarding mining methods, minimum mining dimensions (or pit shell) and internal and, if applicable, external) mining dilution and mining losses used for the techno-economic study and signed-off, such as mining method, mine design criteria, infrastructure, capacities, production schedule, mining efficiencies, grade control, geotechnical and hydrological considerations, closure plans, and personnel requirements.	N/A

5.2. Mining Design				Back to Table of Contents
	Exploration Results	Mineral Resources	Mineral Reserves	Competent Person's Report (CPR)
(iii)	not applicable to Exploration Results	State what mineral resource models have been used in the study.		N/A
(iv)	not applicable to Exploration Results	State what mineral resource models have been used in the study.		N/A
(v)	not applicable to Exploration Results		Description and justification of mining method(s) to be used.	N/A
(vi)	not applicable to Exploration Results		For open-pit mines, include a discussion of pit slopes, slope stability, and strip ratio.	N/A
(vii)	not applicable to Exploration Results		For underground mines, discuss mining method, geotechnical considerations, mine design characteristics, and ventilation/cooling requirements.	N/A
(viii)	not applicable to Exploration Results		Discuss mining rate, equipment selected, grade control methods, geotechnical and hydrogeological considerations, health and safety of the workforce, staffing requirements, dilution, and recovery.	N/A

5.2. Mining Design				Back to Table of Contents
	Exploration Results	Mineral Resources	Mineral Reserves	Competent Person's Report (CPR)
(ix)	not applicable to Exploration Results		State the optimisation methods and any software used in planning, list of constraints (practicality, plant, access, exposed Mineral Reserves, stripped Mineral Reserves, bottlenecks, draw control).	N/A
5.3. Metallurgical and Test work				
	Exploration Results	Mineral Resources	Mineral Reserves	Competent Person's Report (CPR)
(i)	not applicable to Exploration Results	Discuss the source of the sample, the representivity of the potential feed and the techniques used to obtain the samples, laboratory and metallurgical testing techniques.		N/A
(ii)	not applicable to Exploration Results	Explain the basis for assumptions or predictions regarding metallurgical amenability and any preliminary mineralogical test work already carried out.		N/A
(iii)	not applicable to Exploration Results	Discuss the possible processing methods and any processing factors that could have a material effect on the reasonable expectations of eventual economic extraction. Discuss the appropriateness of the processing methods to the style of mineralisation.	Describe and justify the processing method(s) to be used, equipment, plant capacity, efficiencies, and personnel requirements.	N/A

5.3. Metallurgical and Test work				Back to Table of Contents
	Exploration Results	Mineral Resources	Mineral Reserves	Competent Person's Report (CPR)
(iv)	not applicable to Exploration Results		Discuss the nature, amount and representativeness of metallurgical test work undertaken and the recovery factors used. A detailed flow sheet / diagram and a mass balance should exist ,especially for multi-product operations from which the saleable materials are priced for different chemical and physical characteristics.	N/A
(v)	not applicable to Exploration Results		State what assumptions or allowances have been made for deleterious elements and the existence of any bulk-sample or pilot-scale test work and the degree to which such samples are representative of the ore body as a whole.	N/A

5.3. Metallurgical and Test work				Back to Table of Contents
	Exploration Results	Mineral Resources	Mineral Reserves	Competent Person's Report (CPR)
(vi)	not applicable to Exploration Results		State whether the metallurgical process is well-tested technology or novel in nature. If novel, justify its use in Mineral Reserve estimation.	N/A
5.4. Infrastructure				
	Exploration Results	Mineral Resources	Mineral Reserves	Competent Person's Report (CPR)
(i)	not applicable to Exploration Results	Comment regarding the current state of infrastructure or the ease with which the infrastructure can be provided or accessed		N/A
(ii)	not applicable to Exploration Results		Report in sufficient detail to demonstrate that the necessary facilities have been allowed for (which may include, but not be limited to, processing plant, tailings dam, leaching facilities, waste dumps, road, rail or port facilities, water and power supply, offices, housing, security, resource sterilisation testing etc.). Provide detailed maps showing locations of facilities.	N/A

5.4. Infrastructure				Back to Table of Contents
	Exploration Results	Mineral Resources	Mineral Reserves	Competent Person's Report (CPR)
(iii)			Statement showing that all necessary logistics have been considered.	N/A
5.5. Environmental, Social Performance, and Governance				
	Exploration Results	Mineral Resources	Mineral Reserves	Competent Person's Report (CPR)
(i)		General: - Confirm that the company or reporting entity has addressed the host country environmental legal compliance requirements and any mandatory and/or voluntary standards or guidelines to which it subscribes - Identify the necessary permits that will be required and their status and where not yet obtained, confirm that there is a reasonable basis to believe that all permits required for the project will be obtained - Identify and discuss any sensitive areas that may affect the project as well as any other environmental factors including Interested and Affected Parties (I&AP) and/or studies that could have a material effect on the likelihood of eventual economic extraction. Discuss possible means of mitigation. - Identify any legislated social management programmes that may be required and discuss the content and status of these. - Outline and quantify the material socio-economic and cultural impacts that need to be mitigated, and their mitigation measures and where appropriate the associated costs.		N/A

5.5. Environmental, Social Performance, and Governance				Back to Table of Contents
	Exploration Results	Mineral Resources	Mineral Reserves	Competent Person's Report (CPR)
(ii)	<p>Context: The project context is determined and described, including the following aspects:</p> <ul style="list-style-type: none">• The locality's physical geography, centers of population, economic and cultural characteristics;• Existing land and natural resource use for economic, cultural, recreational and conservation purposes (inclusive of environmental and cultural sites of interest);• Existing or historical industrial development and associated infrastructure including mining and quarrying in the region; and• Local governance structures and administrative bodies, their roles and responsibilities in relation to permitting and regulations.• Site access routes and any potential impact on environment or local communities• Provision of energy for activities (e.g. off-grid renewable energy, or sourced direct from local non-renewable power grid with plans for decarbonisation for future project if possible)			<p>See Section 1 Project Outline and Section 2 Geological Setting, Deposit, Mineralisation for descriptions of locality.</p> <p>The Tillståndsportalen (Permit Portal) available on the website for information on permitting, regulations and existing land use. See the company's webpage https://www.viscaria.com/sv/tillstandsportal/</p>
(iii)	<ul style="list-style-type: none">• High level assessment of level of water stress (e.g. potential for drought, flood and impact on water quality)• High level assessment of biodiversity (e.g. endangered species known in area)	<ul style="list-style-type: none">• Associated Environmental and seasonal constraint/ control/consent measures/modifying factors described• Identification of potential climate associated risks and impacts• Social economic and cultural constraint /control/consent measures/ modifying factors described• Any sensitive areas that may affect the project as well as any other environmental factors including I&AP and/or studies that could have a material effect on the likelihood of eventual economic extraction.• Management of project waste and anticipated requirements for large scale infrastructure for mine waste for future, including but not limited to waste dumps and tailings dams.		<p>See the company's application for an environmental permit, found in Tillståndsportalen at https://www.viscaria.com/sv/tillstandsportal/</p>

5.5. Environmental, Social Performance, and Governance				Back to Table of Contents
	Exploration Results	Mineral Resources	Mineral Reserves	Competent Person's Report (CPR)
(iv)	Permits and permission: Identification of the necessary permits that will be required and their status, and where not yet obtained, and confirmation that there is a reasonable basis to believe that all permits required for the project will be obtained in a timely manner. Also include any records of penalties / fines or revoked permits complete with rationale.			All public documents relating to the permitting process can be found in Tillståndsportalen at https://www.viscaria.com/sv/tillstandsportal/
(v)	Liabilities: Describe any known rehabilitation activities, liability and / or compliance costs	<ul style="list-style-type: none"> • Describe the best cost estimate for closure inclusive of environmental, social material remaining liability and compliance costs. • Provide a description of mechanisms in place to address unplanned closure • If appropriate, describe bonding obligations in place to ensure that these liabilities can be funded on a qualitative and quantitative basis. 		All public documents relating to the permitting process can be found in Tillståndsportalen at https://www.viscaria.com/sv/tillstandsportal/
(vi)	Description of stakeholder group characteristics Records of Community and Stakeholder relationships: Records kept of all engagements with all stakeholders from the outset of the project; A grievance and/or complaints procedure established, stakeholders' issues, concerns recorded and tracked until resolved.			All public documents relating to the permitting process can be found in Tillståndsportalen at https://www.viscaria.com/sv/tillstandsportal/
(vii)		A data management system implemented to record and track engagements; Provisions made for vulnerable and or underrepresented stakeholder groups Presence, or not of Indigenous People, if FPIC triggered, how is this managed		N/A
(viii)	Health and safety protocols and procedures required for exploration target definition inclusive of evidence of adherence to them and ongoing health and safety record.	Health and safety procedures and protocols, including community safety and security, across the exploration program inclusive of evidence of adherence to them and ongoing health and safety record		<ul style="list-style-type: none"> • Viscaria Kiruna AB has health and safety protocols and uses the GRIA reporting system for systematic safety work. The company has standard contracts quality assured by lawyers, as well as associated basic requirements and a supplier handbook to meet requirements regarding corruption, bribery and other irregularities, as well as to ensure "good suppliers" at Viscaria.

5.5. Environmental, Social Performance, and Governance				Back to Table of Contents
	Exploration Results	Mineral Resources	Mineral Reserves	Competent Person's Report (CPR)
(ix)	Opportunities for contributing to the local economy identified and utilized where appropriate.	Legislated and or voluntary social development programs that may be required and content and status of these.		All public documents relating to the permitting process can be found in Tillståndsportalen at https://www.viscaria.com/sv/tillstandsportal/
(x)		Material socio-economic and cultural impacts that need to be managed, and where appropriate the associated costs.		N/A
(xi)	Description of corporate governance board structure: gender, nationality, tenure, roles, responsibilities and process for selection of Board members, and Board remuneration processes and procedures			<ul style="list-style-type: none">Gruvaktiebolaget Viscaria is a listed company on Nasdaq and follows the requirements and policies of the stock exchange. The company has been awarded by AllBrights Green List (gender equality in leadership). See http://www.viscaria.com/en/
(xii)	<ul style="list-style-type: none">Commitment to GIIP: transparency, diversity, commitment to ESG describedCorporate commitment to social performance described/ providedCorporate commitment to environmental stewardship described / provided	<ul style="list-style-type: none">Description of how corporate compliance is assured and verifiedDemonstrable commitment to GIIP: transparency, diversity, commitment to ESG describedDemonstrable commitment to social performance describedDemonstrable commitment to environmental stewardship described		All public documents relating to the permitting process can be found in Tillståndsportalen at https://www.viscaria.com/sv/tillstandsportal/

5.5. Environmental, Social Performance, and Governance				Back to Table of Contents
	Exploration Results	Mineral Resources	Mineral Reserves	Competent Person's Report (CPR)
(xiii)	Integrated Risk Management: Description of identified potential modifying factors and management actions taken to manage them where appropriate	<ul style="list-style-type: none">• Description of proposed mitigation plans for identified modifying factors and management actions taken to manage them where appropriate.• Description of any additional risks that may impact on the long term future of the project, even if not deemed to be material at the current time.• Description of how the risk assessment process outlined here is integrated with the overall risk management framework for the company as a whole.		All public documents relating to the permitting process can be found in Tillståndsportalen at https://www.viscaria.com/sv/tillstandsportal/
5.6. Market Studies and Economic Criteria				
	Exploration Results	Mineral Resources	Mineral Reserves	Competent Person's Report (CPR)
(i)	not applicable to Exploration Results	Discuss any technical and economic factors likely to influence the prospect of economic extraction.	Describe the valuable and potentially valuable product(s) including suitability of products, co-products and by products to market.	N/A

5.6. Market Studies and Economic Criteria				Back to Table of Contents
	Exploration Results	Mineral Resources	Mineral Reserves	Competent Person's Report (CPR)
(ii)	not applicable to Exploration Results	Discuss any technical and economic factors likely to influence the prospect of economic extraction.	Describe product to be sold, customer specifications, testing, and acceptance requirements. Discuss whether there exists a ready market for the product and whether contracts for the sale of the product are in place or expected to be readily obtained. Present price and volume forecasts and the basis for the forecast.	N/A
(iii)	not applicable to Exploration Results	Discuss any technical and economic factors likely to influence the prospect of economic extraction.	State and describe all economic criteria that have been used for the study such as capital and operating costs, exchange rates, revenue / price curves, royalties, cut-off grades, reserve pay limits.	N/A

5.6. Market Studies and Economic Criteria				Back to Table of Contents
	Exploration Results	Mineral Resources	Mineral Reserves	Competent Person's Report (CPR)
(iv)	not applicable to Exploration Results	Discuss any technical and economic factors likely to influence the prospect of economic extraction.	Summary description, source and confidence of method used to estimate the commodity price/value profiles used for cut-off grade calculation, economic analysis and project valuation, including applicable taxes, inflation indices, discount rate and exchange rates.	N/A
(v)	not applicable to Exploration Results	Discuss any technical and economic factors likely to influence the prospect of economic extraction.	Present the details of the point of reference for the tonnages and grades reported as Mineral Reserves (e.g. material delivered to the processing facility or saleable product(s)). It is important that, in any situation where the reference point is different, a clarifying statement is included to ensure that the reader is fully informed as to what is being reported.	N/A

5.6. Market Studies and Economic Criteria				Back to Table of Contents
	Exploration Results	Mineral Resources	Mineral Reserves	Competent Person's Report (CPR)
(vi)			Justify assumptions made concerning production cost including transportation, treatment, penalties, exchange rates, marketing and other costs. Provide details of allowances that are made for the content of deleterious elements and the cost of penalties.	N/A
(vii)			Provide details of allowances made for royalties payable, both to Government and private.	N/A
(viii)			State ownership, type, extent and condition of plant and equipment that is significant to the existing operation(s).	N/A
(ix)			Provide details of all environmental, social and labour costs considered	N/A

5.7. Risk Analysis				Back to Table of Contents
	Exploration Results	Mineral Resources	Mineral Reserves	Competent Person's Report (CPR)
(i)	A high-level assessment should be made of key areas of uncertainty which may affect exploration outcomes. An assessment should be provided on the chances of exploration success, together with consideration of any potential threats, such as ESG aspects, which could hinder eventual development of a mining or extraction project in the exploration area."	Report an assessment of technical, environmental, social, economic, political and other key risks to the project. Describe actions that will be taken to mitigate and/or manage the identified risks.		<ul style="list-style-type: none"> This report concerns near-mine exploration, within or directly adjacent to existing exploitation concessions. The main risk is the lack of sufficient data to declare exploration targets and mineral resources. The increasing depth of the deposit introduces risks related to mining operations at deep levels. These include higher mining costs as well as effects on in situ stress on the rock mass, higher temperature and water pressure. The exploration results fall within the current analysis for the mining operation, due to their spatial proximity to declared mineral resources.
5.8. Economic Analysis				
	Exploration Results	Mineral Resources	Mineral Reserves	Competent Person's Report (CPR)
(i)	not applicable to Exploration Results	Describe the basis on which reasonable prospects for eventual economic extraction have been determined, including any material assumptions made in determining the 'reasonable prospects for eventual economic extraction'.	State and justify the inclusion of any Inferred Resources in the Pre-feasibility and Feasibility Studies economic analysis. Report the sensitivity to the inclusion of any Inferred Resources.	N/A

5.8. Economic Analysis				Back to Table of Contents
	Exploration Results	Mineral Resources	Mineral Reserves	Competent Person's Report (CPR)
(ii)	not applicable to Exploration Results	At the relevant level (Scoping Study, Pre-feasibility, Feasibility or on-going Life-of Mine), provide an economic analysis for the project that includes:		N/A
(iii)	not applicable to Exploration Results	Cash Flow forecast on an annual basis using Mineral Reserves or an annual production schedule for the life of the project		N/A
(iv)	not applicable to Exploration Results	A discussion of net present value (NPV), internal rate of return (IRR) and payback period of capital		N/A
(v)	not applicable to Exploration Results	Sensitivity or other analysis using variants in commodity price, grade, capital and operating costs, or other significant parameters, as appropriate and discuss the impact of the results.		N/A

Section 6 Estimation and Reporting of Mineral Reserves

6.1. Estimation and Modelling Techniques				Back to Table of Contents
	Exploration Results	Mineral Resources	Mineral Reserves	Competent Person's Report (CPR)
(i)	not applicable to Exploration Results	Describe the Mineral Resource estimate used as a basis for the conversion to a Mineral Reserve.		N/A
(ii)	not applicable to Exploration Results	Report the Mineral Reserve Statement with sufficient detail indicating if the mining is open pit or underground plus the source and type of mineralisation, domain or ore body, surface dumps, stockpiles and all other sources.		N/A
(iii)	not applicable to Exploration Results		If Inferred resources are used in assessing Mineral reserves, then report and discuss a comparison between the two possibilities, the one with inclusion of Inferred Mineral Resources and the one without inclusion, in such a way so as not to mislead the investors. Identify the quantity of the Inferred Mineral Resources included and the sensitivity of the inclusion to the study.	N/A

6.1. Estimation and Modelling Techniques				Back to Table of Contents
	Exploration Results	Mineral Resources	Mineral Reserves	Competent Person's Report (CPR)
(iv)	not applicable to Exploration Results		A Mineral Reserve Statement in sufficient detail indicating if the mining is open pit or underground plus the source and type of mineralisation , domain or ore body, surface dumps, stockpiles and all other sources.	N/A
(v)	not applicable to Exploration Results		Provide a reconciliation reporting historic reliability of the performance parameters, assumptions and modifying factors including a comparison with the previous Reserve quantity and qualities, if available. Where appropriate, report and comment on any historic trends (e.g. global bias)	N/A

6.2. Classification Criteria				Back to Table of Contents
	Exploration Results	Mineral Resources	Mineral Reserves	Competent Person's Report (CPR)
(i)			Describe and justify criteria and methods used as the basis for the classification of the Mineral Reserves into varying confidence categories, based on the Mineral Resource category, and including consideration of the confidence in all the modifying factors.	N/A
6.3. Reporting				
	Exploration Results	Mineral Resources	Mineral Reserves	Competent Person's Report (CPR)
(i)			Discuss the proportion of Probable Mineral Reserves, which have been derived from Measured Mineral Resources (if any), including the reason(s) therefore.	N/A
(ii)			Present details of for example open pit, underground, residue stockpile, remnants, tailings, and existing pillars or other sources in respect of the Mineral Reserve statement	N/A

6.3. Reporting				Back to Table of Contents
	Exploration Results	Mineral Resources	Mineral Reserves	Competent Person's Report (CPR)
(iii)			Present the details of the defined reference point for the Mineral Reserves. State where the reference point is the point where the run of mine material is delivered to the processing plant. It is important that, in all situations where the reference point is different, such as for a saleable product, a clarifying statement is included to ensure that the reader is fully informed as to what is being reported. State clearly whether the tonnages and grades reported for Mineral Reserves are in respect of material delivered to the plant or after recovery.	N/A
(iv)			Present a reconciliation with the previous Mineral Reserve estimates. Where appropriate, report and comment on any historic trends (e.g. global bias).	N/A

6.3. Reporting				Back to Table of Contents
	Exploration Results	Mineral Resources	Mineral Reserves	Competent Person's Report (CPR)
(v)			Confirm that only Measured and Indicated Mineral Resources can be considered for inclusion in the Mineral Reserve.	N/A
(vi)		State whether the Measured Mineral Resources and Indicated Mineral Resources are inclusive of or additional to the Mineral Reserves.		N/A
6.4. Specific for Metal Equivalents or Combined Grades Reporting				
	Exploration Results	Mineral Resources	Mineral Reserves	Competent Person's Report (CPR)
(i)	Confirm that all reports comply with section 9 (paragraphs 9.1 to 9.5) of the PERC Reporting Standard.			N/A
(ii)		Discuss and describe the basis for the grade estimation for each metal relating to the metal equivalence or combined grade		N/A
(iii)		Disclose all economic criteria that have been used for the calculation such as exchange rates, revenue / price curves, royalties, cut-off grades, pay limits.		N/A
(iv)		Discuss the basis for assumptions or predictions regarding metallurgical factors such as recovery used in the metal equivalents or combined grades calculation.		N/A
(v)		Show the calculation formula used.		N/A

Section 7 Audits and Reviews

7.1. Audits and Reviews				Back to Table of Contents
	Exploration Results	Mineral Resources	Mineral Reserves	Competent Person's Report (CPR)
(i)	State type of review/audit (e.g. independent, external), area (e.g. laboratory, drilling, data, environmental compliance etc.), date and name of the reviewer(s) together with their recognized professional qualifications. State the level of review/audit (desk-top, on-site comparison with standard procedures, or endorsement where auditor/reviewer has checked the work to the extent they stand behind it as if it were their own work).			<ul style="list-style-type: none"> Exploration results reported here have been subject to peer audits as described in Section 3.5.(iii). No formal independent or external review or audit has yet been completed for VDD24036 and VDD25013D, as assay results are pending. A full review, including verification of assay data, QA/QC, and compliance with reporting standards, will be undertaken once assay results are received. At that stage, the review will include both desktop and on-site comparisons to standard procedures and will be conducted by Competent Persons with recognized professional qualifications.
(ii)	Disclose the conclusions of relevant audits or reviews. Note where significant deficiencies and remedial actions are required.			N/A

Section 8 Other Relevant Information				
8.1. Other Relevant Information				Back to Table of Contents
	Exploration Results	Mineral Resources	Mineral Reserves	Competent Person's Report (CPR)
(i)	Discuss all other relevant and material information not discussed elsewhere.			N/A

Section 9 Qualification of Competent Person(s) and other key technical staff. Date and Signature Page				
9.1. Competent Person Details				Back to Table of Contents
	Exploration Results	Mineral Resources	Mineral Reserves	Competent Person's Report (CPR)
(i)	State the full name, registration number and name of the professional body or RPO, for all the Competent Person(s). State the relevant experience of the Competent Person(s) and other key technical staff who prepared and are responsible for the Public Report.			<ul style="list-style-type: none"> Thomas Lindholm is a member of the Fennoscandian Association of Metals and Mining Professionals, FAMMP as well as a Fellow of AusIMM (#230476). He graduated with a M.Sc. in mining engineering from the Luleå University of Technology in 1982 and has since worked in exploration and mine development projects in Sweden and abroad.
(ii)	State the Competent Person's relationship to the issuer of the report.			<ul style="list-style-type: none"> The Competent Person is independent of the company.
(iii)	Provide the Certificate of the Competent Person, including the date of sign-off and the effective date, in the Public Report.			See Competent Person's Certificate

APPENDIX 1: FIGURES

Table of Figures

Figure 1 Geological map of Norrbotten	50
Figure 2 Map of Viscaria's tenures.....	51
Figure 3 Plan view of mineralized zone and DH traces – with DH names.	52
Figure 4 Long section view of mineralized zone and DH traces – with DH names. Facing NE.....	53

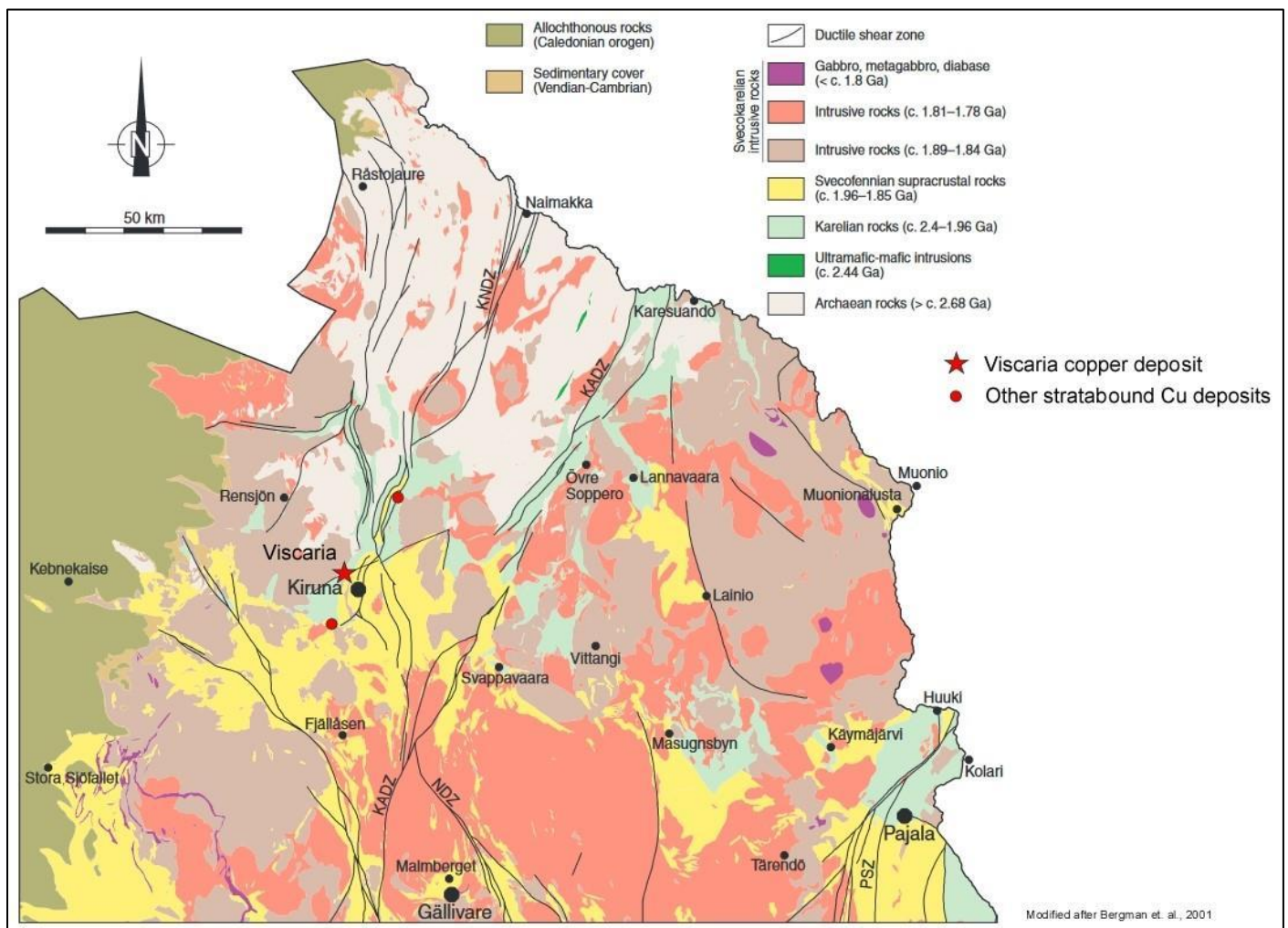


Figure 1 Geological map of Norrbotten

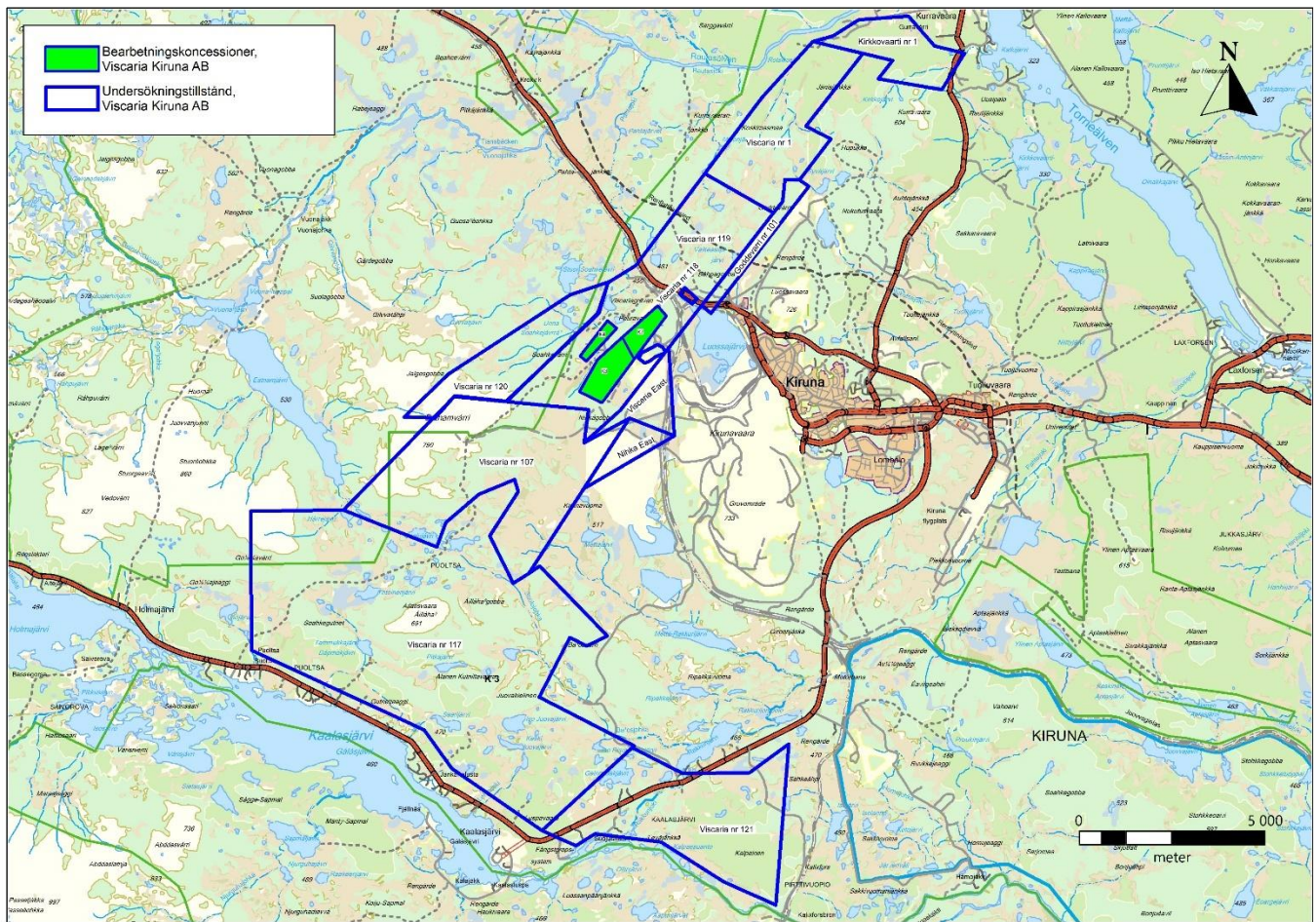


Figure 2 Map of Viscaria's tenures

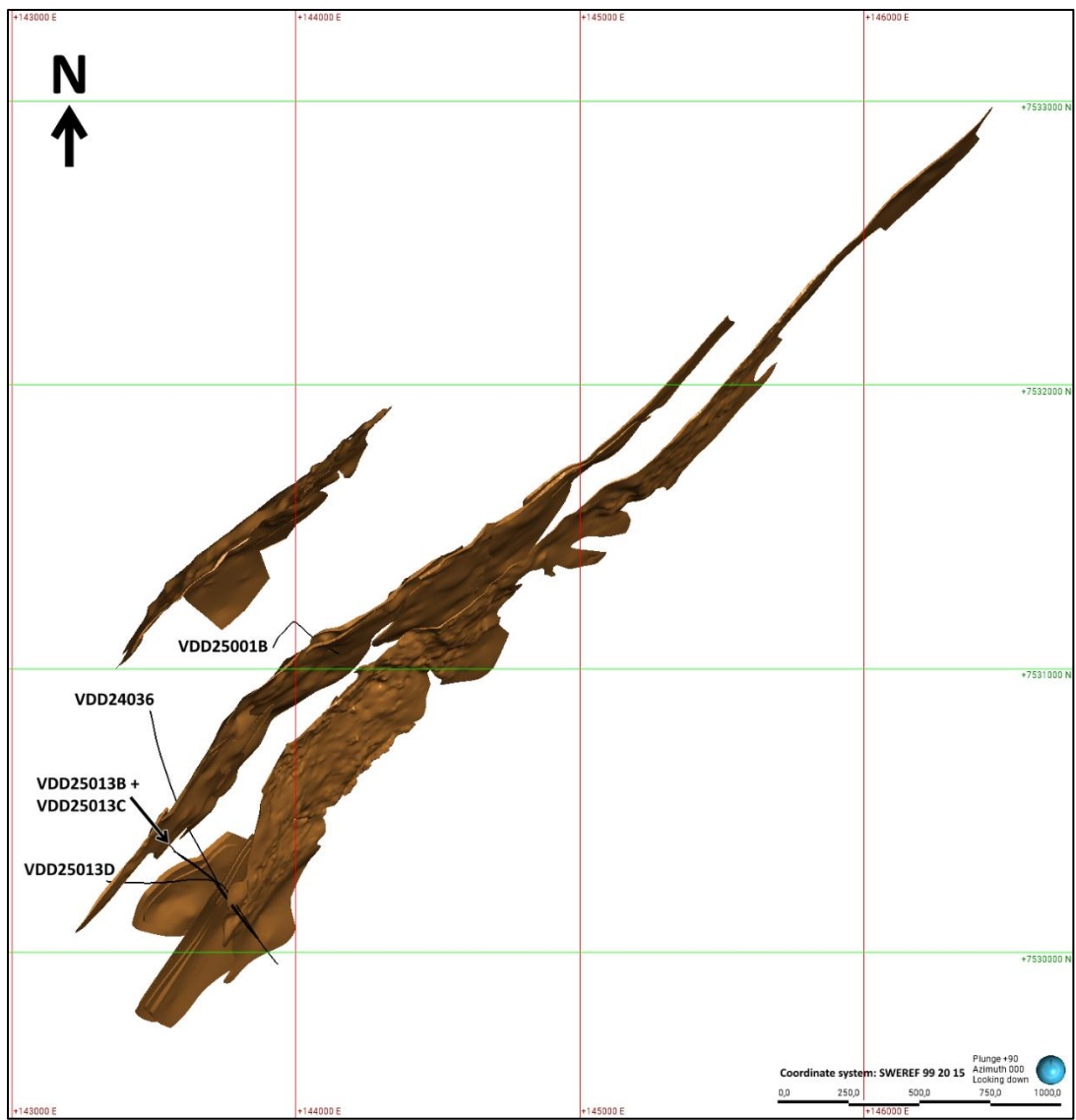


Figure 3 Plan view of mineralized zone and DH traces – with DH names.

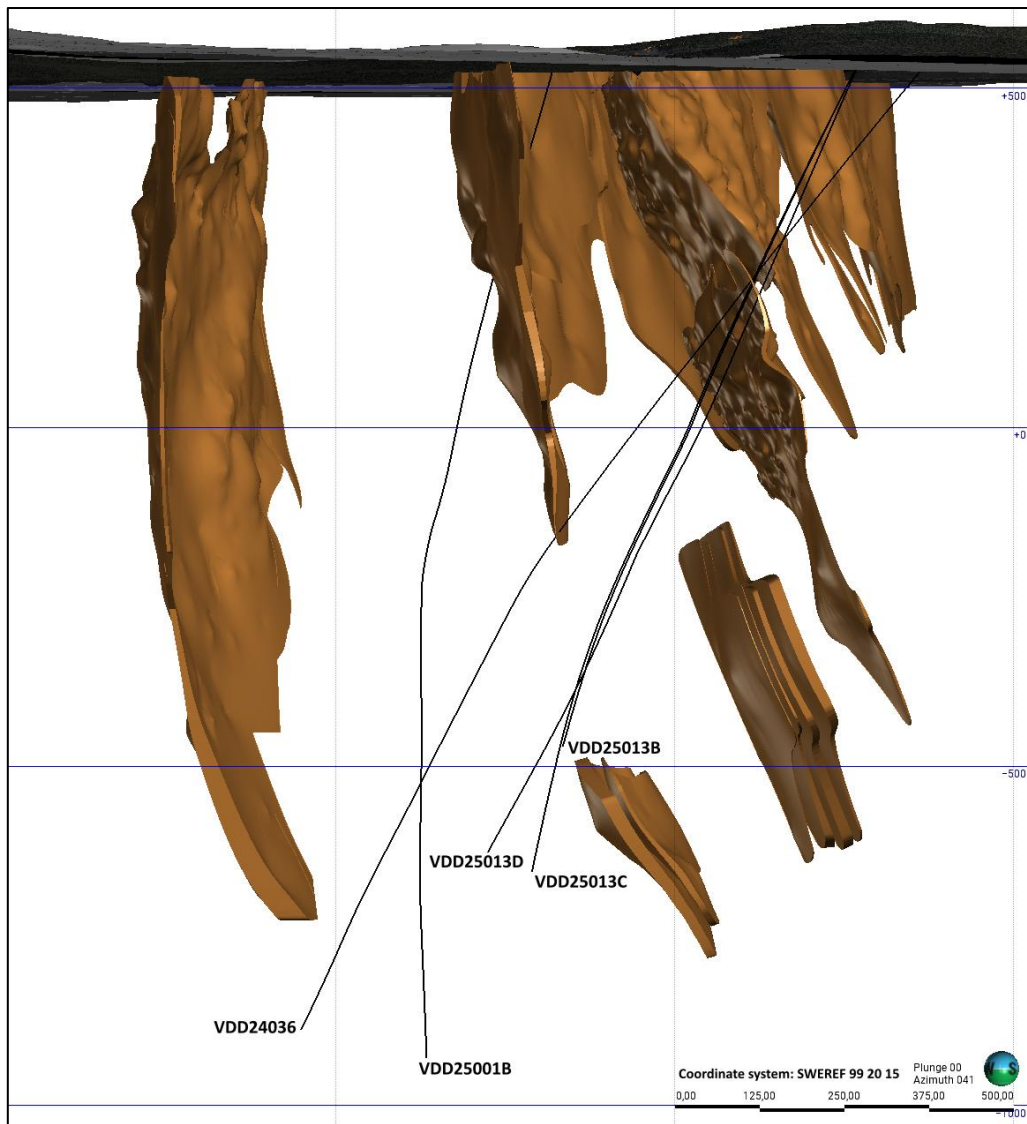


Figure 4 Long section view of mineralized zone and DH traces – with DH names. Facing NE.

APPENDIX 2: ASSAY RESULTS

APPENDIX 2.1: Summary

Table 1: Collar table

Zone	Hole ID	X	Y	Z	Depth (m)	Core size
D	VDD25001B	7531051	144151.2	537.1	1505.5	NQ
B	VDD25013B	7530039	143873	540.3	1106.8	NQ
B	VDD25013C	7530039	143873	540.3	1295.4	NQ

Table 2: Selected intersections

- Ore grades are weighted by density and length with the formula:

$$\frac{\sum(\text{length} \times \text{grade} \times \text{density})}{\sum(\text{length} \times \text{density})}$$
- Where there is core loss within the intersection, the intersection is diluted with 0 grade material. Intervals with >30cm core loss are excluded from sampling.
- Density measurements are focused in sampled intervals, with representative samples in non-sampled intervals. In mineralised and ore zone samples, density measurements were made on every sample interval. Measured core pieces were between 8 and 33 cm. Measured bulk density ranged from 2.43 to 4.74 g/cm³.

Zone	Hole ID	From	To	Total length (m)	Cu%	Fe%
D	VDD25001B	1470.6	1483.1	12.5	< 0.005	37.5
B	VDD25013B	883.4	902.3	18.9	0.85	19.2
B	VDD25013B	957.1	1033.3	76.2	0.99	12.1
B	VDD25013B	982	986.9	4.9	2.15	10.8
B	VDD25013C	1173.55	1226.55	53	0.84	6.4
B	VDD25013C	1191.7	1197.5	5.8	2.31	15.9
B	VDD25013C	947.5	1048.4	100.9	0.80	11.8
B	VDD25013C	966.7	986.4	19.7	1.22	11.7

APPENDIX 2.2: Full assay results

In the drillhole tables below, **CU_PCT** and **FE_PCT** columns are thematically colour-coded based on value ranges.

In **DENSITY** column pale pink-shaded values are directly assigned based on the average bulk density of the local rock type. The remaining values, i.e., those without shading, have density values derived from direct measurements.

In **SAMPLE_ID** column **NO SAMPLE** intervals represent unmineralised zones identified by geological logging and not submitted for assay. Assay values shown are database placeholders, not analytical results. Density values are assigned based on the average bulk density of the local rock type.

HOLE ID: VDD25001B							
DEPTH_FROM	DEPTH_TO	SAMPLE_LENGTH	SAMPLE_ID	CU_PCT	FE_PCT	AG_PPM	DENSITY
692.2	694.2	2	VS070488	0.034	8.26	0.08	2.8
694.2	696.2	2	VS070489	0.007	7.46	0.02	2.8
696.2	698.4	2.2	VS070490	0.051	8.3	0.07	2.8
698.4	700.65	2.25	VS070491	0.021	6.17	0.04	2.8
700.65	702	1.35	VS070492	0.028	8.41	1.46	2.7
702	703	1	VS070493	0.009	6.61	0.04	2.7
703	706	3	VS070494	0.047	6.8	0.06	2.8
706	709	3	VS070495	0.011	7.13	0.04	2.8
709	711.7	2.7	VS070496	0.012	6.67	0.02	2.8
711.7	712.65	0.95	VS070497	0.005	8.3	0.005	2.8
712.65	713.55	0.9	VS070498	0.06	21.7	0.09	2.8
713.55	714.2	0.65	VS070499	0.036	6.84	0.04	2.8
714.2	714.9	0.7	VS070501	0.068	8.04	0.07	2.8
714.9	717.05	2.15	VS070502	0.006	6.63	0.005	2.8
717.05	719.3	2.25	VS070503	0.008	6.51	0.03	2.8
719.3	730.95	11.65	NO SAMPLE	0	5	0	2.8
730.95	732.65	1.7	VS070504	0.012	5.49	0.005	2.8
732.65	734.35	1.7	VS070505	0.006	5.04	0.005	2.8
734.35	737.15	2.8	VS070506	0.023	6.19	0.03	2.8
737.15	740	2.85	VS070507	0.046	6.79	0.07	2.8
740	740.75	0.75	VS070508	0.005	8.71	0.02	2.7
740.75	742.55	1.8	VS070509	0.168	6.85	0.58	2.8
742.55	744.2	1.65	VS070510	0.038	6.53	0.06	2.8
744.2	746.05	1.85	VS070511	0.007	6.14	0.005	2.8
746.05	748.8	2.75	VS070512	0.013	5.91	0.03	2.8
748.8	780.5	31.7	NO SAMPLE	0	5	0	2.8
780.5	783.1	2.6	VS070625	0.007	5	0.005	2.8
783.1	785.7	2.6	VS070626	0.012	5.62	0.005	2.8
785.7	788.3	2.6	VS070627	0.031	6.21	0.07	2.8
788.3	789.15	0.85	VS070628	0.649	16.85	1.24	2.8
789.15	791.7	2.55	VS070630	0.027	5.55	0.06	2.8
791.7	794.3	2.6	VS070631	0.034	6.16	0.03	2.8
794.3	844.3	50	NO SAMPLE	0	10	0	3
844.3	846.9	2.6	VS070632	0.016	13.65	0.06	3
846.9	849.45	2.55	VS070633	0.028	13.85	0.06	3

HOLE ID: VDD25001B							
DEPTH_FROM	DEPTH_TO	SAMPLE_LENGTH	SAMPLE_ID	CU_PCT	FE_PCT	AG_PPM	DENSITY
849.45	849.95	0.5	VS070634	1.765	16.45	2.67	3
849.95	851.3	1.35	VS070635	0.043	12.6	0.06	3
851.3	851.95	0.65	VS070636	0.202	13.55	0.55	3
851.95	854.8	2.85	VS070637	0.044	13.95	0.15	3
854.8	857.65	2.85	VS070638	0.018	14	0.02	3
857.65	860.6	2.95	VS070639	0.027	13.9	0.02	3
860.6	861	0.4	VS070640	0.953	16.95	1.16	3
861	862.4	1.4	VS070641	0.042	12.5	0.05	3
862.4	864.45	2.05	VS070642	0.016	11.45	0.005	3
864.45	866.5	2.05	VS070643	0.049	11.95	0.07	3
866.5	889.7	23.2	NO SAMPLE	0	10	0	3
889.7	890.05	0.35	VS070700	0.043	18.2	0.08	2.9
890.05	891.45	1.4	VS070701	0.136	14	0.21	2.9
891.45	892.15	0.7	VS070702	0.371	2.59	0.48	2.9
892.15	894.1	1.95	VS070703	0.031	10.15	0.1	2.9
894.1	896.5	2.4	VS070704	0.005	13.45	0.03	2.9
896.5	899.45	2.95	VS070705	0.018	13.55	0.04	2.9
899.45	900.45	1	VS070706	0.022	9.6	0.06	2.9
900.45	901.85	1.4	VS070707	0.028	11.9	0.06	2.9
901.85	904.85	3	VS070708	0.034	9.24	0.09	2.9
904.85	907.85	3	VS070709	0.012	9.8	0.03	2.9
907.85	909.85	2	VS070710	0.003	9.38	0.04	2.9
909.85	911.95	2.1	VS070711	0.016	9.18	0.05	2.9
911.95	914.6	2.65	VS070712	0.013	9.64	0.06	3
914.6	917.2	2.6	VS070713	0.009	10	0.03	3
917.2	918.9	1.7	VS070715	0.007	9.69	0.03	2.9
918.9	920.8	1.9	VS070716	0.025	8.94	0.06	2.9
920.8	921.45	0.65	VS070717	0.248	7.88	0.45	2.9
921.45	924.4	2.95	VS070718	0.024	9.51	0.05	2.9
924.4	927.3	2.9	VS070719	0.01	8.55	0.02	2.9
927.3	929.2	1.9	VS070720	0.009	9.8	0.03	2.9
929.2	931.05	1.85	VS070721	0.014	11.1	0.03	2.9
931.05	933.15	2.1	VS070722	0.042	18.2	0.09	3
933.15	935.25	2.1	VS070723	0.017	17.6	0.04	3
935.25	937.85	2.6	VS070724	0.029	15.55	0.04	3
937.85	940.05	2.2	VS070725	0.025	15.45	0.08	3
940.05	943.05	3	VS070726	0.018	15.25	0.07	3
943.05	945.2	2.15	VS070727	0.025	14.05	0.08	3
945.2	1165.15	219.95	NO SAMPLE	0	5	0	2.8
1165.15	1168.15	3	VS071003	0.003	3.92	0.005	2.77
1168.15	1171.15	3	VS071004	0.012	4.44	0.02	2.8
1171.15	1174.05	2.9	VS071005	0.055	3.98	0.16	2.81
1174.05	1174.85	0.8	VS071006	0.012	4.93	0.02	2.8
1174.85	1177.75	2.9	VS071007	0.021	7.54	0.05	2.78
1177.75	1180.2	2.45	VS071008	0.007	3.09	0.02	2.75
1180.2	1181.75	1.55	VS071009	0.063	6.8	0.24	2.77
1181.75	1183.25	1.5	VS071010	0.147	3.42	0.19	2.74

HOLE ID: VDD25001B							
DEPTH_FROM	DEPTH_TO	SAMPLE_LENGTH	SAMPLE_ID	CU_PCT	FE_PCT	AG_PPM	DENSITY
1183.25	1184.55	1.3	VS071011	0.006	6.19	0.005	2.9
1184.55	1185.45	0.9	VS071012	0.052	6.39	0.03	2.8
1185.45	1185.85	0.4	VS071013	0.002	5.82	0.005	2.8
1185.85	1187.2	1.35	VS071014	0.018	3.81	0.03	2.83
1187.2	1189.1	1.9	VS071015	0.001	7.22	0.02	2.91
1189.1	1190.15	1.05	VS071017	0.061	2.31	0.03	2.81
1190.15	1190.45	0.3	VS071018	0.001	9.52	0.02	2.8
1190.45	1193.2	2.75	VS071019	0	7.48	0.005	2.81
1193.2	1195.65	2.45	VS071020	0	5.51	0.04	2.8
1195.65	1198.6	2.95	VS071021	0	6.93	0.005	2.8
1198.6	1201.6	3	VS071022	0	6.43	0.005	2.8
1201.6	1204.3	2.7	VS071023	0	6.48	0.005	2.81
1204.3	1207.3	3	VS071024	0	6.48	0.005	2.8
1207.3	1210.3	3	VS071025	0	6.42	0.005	2.8
1210.3	1213.3	3	VS071026	0	6.14	0.02	2.8
1213.3	1216.3	3	VS071027	0	6.18	0.005	2.8
1216.3	1219.3	3	VS071028	0	5.94	0.005	2.83
1219.3	1222.3	3	VS071029	0	5.81	0.04	2.8
1222.3	1225.3	3	VS071031	0	6.15	0.02	2.8
1225.3	1228.1	2.8	VS071032	0	5.43	0.005	2.8
1228.1	1230.2	2.1	VS071033	0	5.5	0.005	2.8
1230.2	1232.55	2.35	VS071034	0	5.47	0.005	2.93
1232.55	1234	1.45	VS071035	0	5.32	0.02	3
1234	1237	3	VS071036	0	6.48	0.03	3
1237	1239.85	2.85	VS071037	0	6.51	0.005	3
1239.85	1242.3	2.45	VS071038	0	6.86	0.005	3
1242.3	1244.85	2.55	VS071039	0	6.61	0.2	3.22
1244.85	1247.8	2.95	VS071040	0	6.45	0.005	3
1247.8	1250.8	3	VS071041	0	7.74	0.04	3
1250.8	1252.9	2.1	VS071042	0	8.94	0.03	3
1252.9	1255	2.1	VS071043	0	7.59	0.02	3
1255	1256.4	1.4	VS071045	0	7.74	0.005	3.01
1256.4	1259.15	2.75	VS071046	0	7.94	0.005	3
1259.15	1260.75	1.6	VS071047	0	4.12	0.005	3
1260.75	1262.5	1.75	VS071048	0	4.54	0.005	2.77
1262.5	1265	2.5	VS071049	0	6.84	0.005	2.89
1265	1267.2	2.2	VS071050	0	5.95	0.005	2.8
1267.2	1269.2	2	VS071051	0	5.41	0.005	2.84
1269.2	1271	1.8	VS071052	0	6.37	0.005	2.89
1271	1271.95	0.95	VS071053	0	7.7	0.005	2.8
1271.95	1274.95	3	VS071054	0	6.67	0.005	2.8
1274.95	1277.95	3	VS071055	0	7.17	0.005	2.8
1277.95	1280.95	3	VS071056	0	6.5	0.005	2.8
1280.95	1283.95	3	VS071057	0	6	0.005	2.77
1283.95	1286.95	3	VS071059	0	6.03	0.005	2.8
1286.95	1289.95	3	VS071060	0	5.92	0.005	2.8
1289.95	1292.15	2.2	VS071061	0	5.36	0.005	2.8

HOLE ID: VDD25001B							
DEPTH_FROM	DEPTH_TO	SAMPLE_LENGTH	SAMPLE_ID	CU_PCT	FE_PCT	AG_PPM	DENSITY
1292.15	1293.6	1.45	VS071062	0	6.38	0.005	2.8
1293.6	1296	2.4	VS071063	0	6.75	0.005	2.8
1296	1298.8	2.8	VS071064	0	1.98	0.005	2.8
1298.8	1300.7	1.9	VS071065	0	2.51	0.005	2.8
1300.7	1302.65	1.95	VS071066	0	2.35	0.005	2.8
1302.65	1304.25	1.6	VS071067	0	1.68	0.005	2.8
1304.25	1305.9	1.65	VS071068	0	1.28	0.005	2.87
1305.9	1308.45	2.55	VS071069	0	0.77	0.005	2.8
1308.45	1311.15	2.7	VS071070	0	0.79	0.005	2.8
1311.15	1313.5	2.35	VS071071	0	1.4	0.005	2.8
1313.5	1314.9	1.4	VS071073	0.11	2.69	0.12	2.8
1314.9	1317.9	3	VS071074	0.001	0.68	0.005	2.75
1317.9	1320.9	3	VS071075	0.022	0.65	0.02	2.8
1320.9	1323.9	3	VS071076	0.03	0.46	0.02	2.8
1323.9	1326.8	2.9	VS071077	0.006	0.62	0.005	2.8
1326.8	1329.5	2.7	VS071078	0.001	0.76	0.005	2.8
1329.5	1331.95	2.45	VS071079	0.005	0.99	0.005	2.85
1331.95	1334.6	2.65	VS071080	0.017	0.97	0.02	2.8
1334.6	1337.6	3	VS071082	0.001	0.78	0.005	2.8
1337.6	1340.4	2.8	VS071083	0.001	1.33	0.005	2.8
1340.4	1343.3	2.9	VS071084	0.001	2.19	0.005	2.8
1343.3	1345.25	1.95	VS071085	0.001	2.93	0.005	2.91
1345.25	1346.95	1.7	VS071086	0	1.3	0.005	2.9
1346.95	1349.75	2.8	VS071087	0	2.23	0.005	2.9
1349.75	1352.55	2.8	VS071088	0	5.56	0.005	2.93
1352.55	1353.15	0.6	VS071089	0.003	3.8	0.005	2.9
1353.15	1355.65	2.5	VS071090	0.001	2.87	0.005	2.91
1355.65	1356.55	0.9	VS071302	0	1.91	0.005	2.88
1356.55	1357.25	0.7	VS071303	0.001	2.22	0.005	2.9
1357.25	1358.55	1.3	VS071304	0	2.38	0.005	2.92
1358.55	1359.5	0.95	VS071305	0	1.74	0.005	2.9
1359.5	1360.25	0.75	VS071306	0	7.45	0.005	2.85
1360.25	1361.35	1.1	VS071307	0	1.87	0.005	2.9
1361.35	1361.8	0.45	VS071308	0	4.01	0.02	2.89
1361.8	1363.1	1.3	VS071309	0	3.81	0.005	2.9
1363.1	1363.75	0.65	VS071310	0	16.7	0.005	3.52
1363.75	1364.35	0.6	VS071311	0	57.2	0.005	4.54
1364.35	1365.05	0.7	VS071312	0	4.78	0.005	2.94
1365.05	1365.6	0.55	VS071313	0	25.7	0.005	3.5
1365.6	1366.8	1.2	VS071314	0	1.17	0.005	2.9
1366.8	1368	1.2	VS071316	0	1.62	0.005	2.88
1368	1369.75	1.75	VS071317	0.001	7.41	0.005	3.06
1369.75	1370.4	0.65	VS071318	0.001	10.6	0.005	2.95
1370.4	1371.65	1.25	VS071319	0.001	11.9	0.005	3
1371.65	1372.7	1.05	VS071320	0.001	14.6	0.005	3
1372.7	1373.05	0.35	VS071321	0.002	36.8	0.005	3.73
1373.05	1373.4	0.35	VS071322	0.001	51.2	0.005	3.73

HOLE ID: VDD25001B							
DEPTH_FROM	DEPTH_TO	SAMPLE_LENGTH	SAMPLE_ID	CU_PCT	FE_PCT	AG_PPM	DENSITY
1373.4	1373.95	0.55	VS071323	0.001	16.75	0.005	3.1
1373.95	1374.95	1	VS071324	0	6.87	0.005	3.02
1374.95	1376.25	1.3	VS071325	0	7.89	0.005	3
1376.25	1376.95	0.7	VS071326	0	5.94	0.005	2.92
1376.95	1378.25	1.3	VS071327	0	5.15	0.005	2.92
1378.25	1379.2	0.95	VS071328	0	2.24	0.005	2.9
1379.2	1380.4	1.2	VS071330	0	2.02	0.005	2.89
1380.4	1381.7	1.3	VS071331	0	3.49	0.005	2.89
1381.7	1382.5	0.8	VS071332	0	11.55	0.005	2.92
1382.5	1383.4	0.9	VS071333	0	12.35	0.005	2.93
1383.4	1383.9	0.5	VS071334	0.023	11.3	0.005	2.97
1383.9	1384.8	0.9	VS071335	0.002	8.67	0.005	3.23
1384.8	1386.05	1.25	VS071336	0	1.36	0.005	2.9
1386.05	1387.2	1.15	VS071337	0	1.23	0.005	2.9
1387.2	1388.25	1.05	VS071338	0.002	1.34	0.005	2.89
1388.25	1389.5	1.25	VS071339	0.006	1.23	0.005	2.9
1389.5	1390.8	1.3	VS071340	0.001	1.08	0.005	2.9
1390.8	1392.1	1.3	VS071341	0.002	1.22	0.005	2.9
1392.1	1393.15	1.05	VS071342	0	2.97	0.005	2.9
1393.15	1394.2	1.05	VS071344	0	3.37	0.005	2.9
1394.2	1394.8	0.6	VS071345	0.001	14.75	0.005	3.07
1394.8	1395.15	0.35	VS071346	0	7.01	0.005	2.84
1395.15	1396.35	1.2	VS071347	0	8.06	0.005	2.94
1396.35	1396.95	0.6	VS071348	0	5.27	0.005	2.91
1396.95	1397.4	0.45	VS071349	0	17.35	0.005	3.03
1397.4	1398.55	1.15	VS071350	0	3.27	0.005	2.84
1398.55	1399.7	1.15	VS071351	0.001	3.94	0.005	2.93
1399.7	1400.6	0.9	VS071352	0.001	2.7	0.005	2.83
1400.6	1401.75	1.15	VS071353	0	2.3	0.005	2.83
1401.75	1402.85	1.1	VS071354	0.001	10.05	0.005	2.94
1402.85	1403.95	1.1	VS071355	0.001	14.6	0.005	3.14
1403.95	1404.8	0.85	VS071356	0	12.35	0.005	2.89
1404.8	1405.65	0.85	VS071357	0.001	11.8	0.02	2.9
1405.65	1406.7	1.05	VS071359	0.002	11.95	0.005	2.87
1406.7	1407.6	0.9	VS071360	0	12	0.005	2.93
1407.6	1408.4	0.8	VS071361	0.029	64.9	0.005	4.74
1408.4	1408.85	0.45	VS071362	0.003	46.3	0.005	3.58
1408.85	1410.1	1.25	VS071363	0.004	49.7	0.005	3.91
1410.1	1411.25	1.15	VS071364	0.003	5.65	0.005	2.93
1411.25	1412.5	1.25	VS071365	0.018	2.84	0.005	2.9
1412.5	1413.3	0.8	VS071366	0.001	3.29	0.005	2.91
1413.3	1414.1	0.8	VS071367	0.001	3.66	0.005	2.91
1414.1	1415	0.9	VS071368	0.001	2.63	0.005	2.91
1415	1415.7	0.7	VS071369	0.001	2.87	0.005	2.85
1415.7	1416.4	0.7	VS071370	0.144	9.31	0.03	2.96
1416.4	1417.2	0.8	VS071371	0.013	6.79	0.005	2.86
1417.2	1417.75	0.55	VS071373	0.006	22	0.005	3.15

HOLE ID: VDD25001B							
DEPTH_FROM	DEPTH_TO	SAMPLE_LENGTH	SAMPLE_ID	CU_PCT	FE_PCT	AG_PPM	DENSITY
1417.75	1418.55	0.8	VS071374	0.001	20.1	0.005	3.04
1418.55	1419.85	1.3	VS071375	0.001	19	0.005	3.05
1419.85	1421.05	1.2	VS071376	0	3.36	0.005	2.81
1421.05	1422	0.95	VS071377	0	1.75	0.005	2.85
1422	1422.7	0.7	VS071378	0	0.77	0.005	2.91
1422.7	1423.95	1.25	VS071379	0.002	0.23	0.005	2.95
1423.95	1424.85	0.9	VS071380	0	0.11	0.005	2.96
1424.85	1425.3	0.45	VS071381	0.028	2.43	0.03	2.87
1425.3	1427.8	2.5	VS071382	0	0.05	0.005	2.9
1427.8	1430.4	2.6	VS071383	0	0.07	0.005	2.92
1430.4	1433	2.6	VS071384	0.001	0.09	0.005	2.9
1433	1435.6	2.6	VS071385	0	0.11	0.005	2.9
1435.6	1438.45	2.85	VS071387	0	0.15	0.005	2.96
1438.45	1439.75	1.3	VS071388	0.001	0.14	0.005	2.9
1439.75	1442.3	2.55	VS071389	0	0.14	0.005	2.9
1442.3	1443.1	0.8	VS071390	0	0.8	0.005	2.9
1443.1	1444.4	1.3	VS071391	0.054	2.83	0.005	2.9
1444.4	1445.7	1.3	VS071392	0.018	2.74	0.005	2.9
1445.7	1447.3	1.6	VS071393	0.026	4.44	0.005	2.99
1447.3	1448.65	1.35	VS071394	0.001	0.53	0.005	2.9
1448.65	1450	1.35	VS071395	0.002	5.44	0.005	2.79
1450	1451.2	1.2	VS071396	0.002	0.61	0.005	2.9
1451.2	1451.9	0.7	VS071397	0	0.48	0.005	2.9
1451.9	1452.65	0.75	VS071398	0	0.33	0.005	2.9
1452.65	1453.7	1.05	VS071399	0	0.35	0.005	2.9
1453.7	1454.4	0.7	VS071401	0.006	0.6	0.005	2.95
1454.4	1455.35	0.95	VS071402	0.03	0.95	0.005	2.9
1455.35	1456.15	0.8	VS071403	0	0.62	0.005	2.93
1456.15	1456.7	0.55	VS071404	0	0.49	0.005	2.86
1456.7	1457.95	1.25	VS071405	0.001	0.63	0.005	2.93
1457.95	1458.7	0.75	VS071406	0.334	3.42	0.1	3
1458.7	1459.35	0.65	VS071407	0.072	2.33	0.02	2.95
1459.35	1460.15	0.8	VS071408	0	0.55	0.005	2.92
1460.15	1460.9	0.75	VS071409	0	0.56	0.005	2.94
1460.9	1461.9	1	VS071410	0	0.24	0.005	2.98
1461.9	1463.15	1.25	VS071411	0	0.24	0.005	2.96
1463.15	1464.4	1.25	VS071412	0	0.14	0.005	2.92
1464.4	1465.35	0.95	VS071413	0	0.18	0.005	2.92
1465.35	1466.35	1	VS071415	0	0.27	0.005	2.95
1466.35	1467.35	1	VS071416	0	0.29	0.005	2.91
1467.35	1468.6	1.25	VS071417	0	0.2	0.005	2.92
1468.6	1469.2	0.6	VS071418	0.07	13.75	0.04	3.05
1469.2	1470	0.8	VS071419	0.003	20.8	0.005	2.93
1470	1470.6	0.6	VS071420	0.001	16.8	0.005	3.29
1470.6	1471.6	1	VS071421	0.012	47.2	0.02	4.05
1471.6	1471.9	0.3	VS071422	0.004	34.8	0.005	3.09
1471.9	1472.9	1	VS071423	0.004	36.4	0.005	3.38

HOLE ID: VDD25001B							
DEPTH_FROM	DEPTH_TO	SAMPLE_LENGTH	SAMPLE_ID	CU_PCT	FE_PCT	AG_PPM	DENSITY
1472.9	1473.65	0.75	VS071424	0.004	48.9	0.005	4.16
1473.65	1474.1	0.45	VS071425	0.002	22.9	0.02	3.11
1474.1	1475.1	1	VS071426	0.002	43.3	0.03	4.07
1475.1	1475.65	0.55	VS071427	0.002	34.2	0.02	3.85
1475.65	1476.65	1	VS071429	0.003	49.7	0.005	4.19
1476.65	1477.75	1.1	VS071430	0	16.65	0.02	3.18
1477.75	1478.95	1.2	VS071431	0	15.4	0.02	3.3
1478.95	1480	1.05	VS071432	0.002	46.1	0.005	4.32
1480	1481.05	1.05	VS071433	0.002	33.7	0.005	3.64
1481.05	1482	0.95	VS071434	0.003	39	0.005	3.51
1482	1483.1	1.1	VS071435	0.003	41.2	0.005	3.76
1483.1	1484	0.9	VS071436	0.001	17.7	0.005	3.12
1484	1485.05	1.05	VS071438	0.001	4.71	0.005	2.89
1485.05	1486.05	1	VS071439	0.001	15.6	0.005	3.21
1486.05	1486.65	0.6	VS071440	0.085	40	0.06	3.34
1486.65	1487.85	1.2	VS071441	0.056	21.9	0.04	2.92
1487.85	1488.85	1	VS071442	0.01	8.7	0.005	2.93
1488.85	1489.8	0.95	VS071443	0.01	9.62	0.005	2.96
1489.8	1490.2	0.4	VS071444	0.035	10.05	0.005	2.95
1490.2	1490.8	0.6	VS071641	0.012	9.39	0.005	2.98
1490.8	1491.9	1.1	VS071642	0.071	8.32	0.04	2.93
1491.9	1493.2	1.3	VS071643	0.005	8.19	0.005	2.93
1493.2	1493.6	0.4	VS071644	0.432	21.7	0.13	3.48
1493.6	1494.6	1	VS071645	0.001	12.7	0.005	3.08
1494.6	1495.2	0.6	VS071646	0.002	38.1	0.005	3.35
1495.2	1495.9	0.7	VS071647	0	9.5	0.005	2.97
1495.9	1496.65	0.75	VS071648	0	12.9	0.005	2.9
1496.65	1497.4	0.75	VS071649	0.002	29.2	0.005	3.4
1497.4	1498.4	1	VS071651	0.001	8.48	0.005	2.92
1498.4	1499.1	0.7	VS071652	0.428	31.6	0.11	3.3
1499.1	1500.4	1.3	VS071653	0.052	8.61	0.02	2.97
1500.4	1501	0.6	VS071654	0.19	10.45	0.07	3
1501	1501.7	0.7	VS071655	0.097	8.03	0.06	2.93
1501.7	1502.2	0.5	VS071656	0.062	9.14	0.04	2.93
1502.2	1502.5	0.3	VS071657	0.617	9.54	0.34	2.93
1502.5	1502.95	0.45	VS071658	0.056	9.59	0.04	2.98
1502.95	1503.45	0.5	VS071659	0.038	13.5	0.02	2.95
1503.45	1504.4	0.95	VS071660	0.001	7.65	0.03	2.81
1504.4	1505.5	1.1	VS071661	0	6.69	0.005	2.87

HOLE ID: VDD25013B							
DEPTH_FROM	DEPTH_TO	SAMPLE_LENGTH	SAMPLE_ID	CU_PCT	FE_PCT	AG_PPM	DENSITY
566.9	569.8	2.9	VS072822	0.018	10.05	0.06	2.94
569.8	572	2.2	VS072823	0.007	8.47	0.03	2.94
572	573.35	1.35	VS072824	0.016	8.43	0.04	2.94
573.35	575.7	2.35	VS072825	0.007	9.86	0.03	2.7
575.7	577.1	1.4	VS072826	0.017	5.6	0.12	2.7
577.1	578.8	1.7	VS072827	0.011	7.52	0.1	2.7
578.8	581.8	3	VS072828	0.021	8.28	0.07	2.68
581.8	583.65	1.85	VS072829	0.042	8.43	0.11	2.7
583.65	585.2	1.55	VS072830	0.003	9.88	0.02	2.8
585.2	587.8	2.6	VS072831	0.004	10.75	0.04	2.9
587.8	590.3	2.5	VS072832	0.008	13.8	0.03	2.8
590.3	593.3	3	VS072833	0.021	14.55	0.06	2.8
593.3	596.3	3	VS072834	0.014	12.25	0.03	2.7
596.3	598	1.7	VS072835	0.123	20.5	0.32	2.8
598	600.25	2.25	VS072836	0.034	8.44	0.06	2.7
600.25	602.3	2.05	VS072837	0.035	8.47	0.09	2.7
602.3	604.75	2.45	VS072838	0.043	8.74	0.12	2.7
604.75	607.2	2.45	VS072840	0.028	9.03	0.06	2.8
607.2	609.3	2.1	VS072841	0.021	7.54	0.06	2.8
609.3	612	2.7	VS072842	0.014	7.06	0.05	2.8
612	614.3	2.3	VS072843	0.006	8.4	0.03	2.8
614.3	617.3	3	VS072844	0.014	7.85	0.04	2.8
617.3	620.3	3	VS072845	0.009	8.74	0.05	2.8
620.3	623.3	3	VS072846	0.009	7.15	0.11	2.7
623.3	625	1.7	VS072847	0.018	5.85	0.17	2.7
625	627.1	2.1	VS072848	0.017	4.75	0.2	2.72
627.1	629.3	2.2	VS072849	0.004	7.63	0.08	2.62
629.3	632.2	2.9	VS072850	0.011	6.91	0.18	2.62
632.2	634.1	1.9	VS072851	0.075	10.1	1.32	2.8
634.1	635.6	1.5	VS072852	0.035	7.81	0.07	2.77
635.6	638.3	2.7	VS072853	0.016	9.22	0.08	2.77
638.3	641	2.7	VS072854	0.004	9.41	0.03	2.77
641	643	2	VS072856	0.026	10.55	0.06	2.77
643	644.7	1.7	VS072857	0.028	10.25	0.08	2.77
644.7	647.3	2.6	VS072858	0.02	6.39	0.07	2.8
647.3	649.4	2.1	VS072859	0.013	6.86	0.14	2.8
649.4	652	2.6	VS072860	0.048	7.93	0.56	2.8
652	653.4	1.4	VS072861	0.071	8.82	0.56	2.8
653.4	655.7	2.3	VS072862	0.007	6.6	0.07	2.77
655.7	657.15	1.45	VS072863	0.005	7.04	0.11	2.77
657.15	657.85	0.7	VS072864	0.008	7.51	0.04	2.8
657.85	660	2.15	VS072865	0.022	10.2	0.05	2.85
660	662.3	2.3	VS072866	0.009	11.7	0.02	2.9
662.3	665.3	3	VS072867	0.01	9.15	0.04	2.9
665.3	668.3	3	VS072868	0.01	9.77	0.03	2.94
668.3	671.3	3	VS072869	0.006	11.7	0.02	2.9
671.3	673	1.7	VS072870	0.011	8.87	0.05	2.97

HOLE ID: VDD25013B							
DEPTH_FROM	DEPTH_TO	SAMPLE_LENGTH	SAMPLE_ID	CU_PCT	FE_PCT	AG_PPM	DENSITY
673	674.3	1.3	VS072872	0.113	7.72	0.72	2.9
674.3	676	1.7	VS072873	0.012	9.23	0.03	2.9
676	677.7	1.7	VS072874	0.018	9.52	0.05	2.9
677.7	680.2	2.5	VS072875	0.026	9.93	0.05	2.9
680.2	682.3	2.1	VS072876	0.03	10.1	0.06	2.9
682.3	683.3	1	VS072877	0.038	7.12	0.05	2.8
683.3	686.3	3	VS072878	0.011	9.77	0.04	2.88
686.3	688.45	2.15	VS072879	0.011	9.47	0.03	2.8
688.45	690.4	1.95	VS072880	0.032	11.55	0.08	2.8
690.4	691.85	1.45	VS072881	0.016	7.28	0.04	2.8
691.85	694.55	2.7	VS072882	0.043	10	0.08	2.81
694.55	696.5	1.95	VS072883	0.028	11.5	0.06	2.8
696.5	698.3	1.8	VS072884	0.008	11.25	0.04	2.8
698.3	699.7	1.4	VS072885	0.009	13.3	0.03	2.8
699.7	701.75	2.05	VS072886	0.026	13.35	0.05	2.8
701.75	704.3	2.55	VS072887	0.009	13.25	0.02	2.83
704.3	707.3	3	VS072889	0.02	14.7	0.04	2.8
707.3	710.3	3	VS072890	0.009	14	0.02	2.7
710.3	713.3	3	VS072891	0.02	14.15	0.03	2.7
713.3	716.3	3	VS072892	0.012	14.15	0.03	2.66
716.3	719.3	3	VS072893	0.031	14.5	0.06	2.7
719.3	721.4	2.1	VS072894	0.017	13.65	0.03	2.75
721.4	723.4	2	VS072895	0.016	13.35	0.02	2.7
723.4	725.8	2.4	VS072896	0.004	13.45	0.02	2.7
725.8	727.85	2.05	VS072897	0.026	11.7	0.03	2.7
727.85	728.3	0.45	VS072898	0.065	11.8	0.1	2.7
728.3	729.5	1.2	VS072899	0.025	10.8	0.05	2.68
729.5	731.95	2.45	VS072900	0.034	12.2	0.06	2.7
731.95	733	1.05	VS072901	0.028	12.05	0.05	2.7
733	734	1	VS072902	0.052	11.65	0.12	2.72
734	735	1	VS072903	0.218	10.3	0.25	2.7
735	737.8	2.8	VS072905	0.022	11.8	0.05	2.7
737.8	740.6	2.8	VS072906	0.01	12.95	0.03	2.7
740.6	742.4	1.8	VS072908	0.018	10.85	0.04	2.7
742.4	744.3	1.9	VS072909	0.016	10.5	0.03	2.7
744.3	746.35	2.05	VS072910	0.014	13.8	0.04	2.7
746.35	748.2	1.85	VS072911	0.008	14.1	0.03	2.7
748.2	749.6	1.4	VS072912	0.031	11.3	0.06	2.7
749.6	751.35	1.75	VS072913	0.011	12.1	0.04	2.7
751.35	752.85	1.5	VS072914	0.038	13.45	0.06	2.7
752.85	754.9	2.05	VS072915	0.008	13.1	0.03	3
754.9	756.7	1.8	VS072916	0.007	10.2	0.005	3
756.7	758	1.3	VS072917	0.052	13.2	0.05	3
758	759.3	1.3	VS072919	0.025	13.6	0.02	3
759.3	760.6	1.3	VS072920	0.035	14.9	0.04	3
760.6	761.9	1.3	VS072921	0.076	15.2	0.06	3
761.9	763.2	1.3	VS072922	0.049	14.1	0.05	3

HOLE ID: VDD25013B							
DEPTH_FROM	DEPTH_TO	SAMPLE_LENGTH	SAMPLE_ID	CU_PCT	FE_PCT	AG_PPM	DENSITY
763.2	764.45	1.25	VS072923	0.059	14.6	0.06	3
764.45	765.75	1.3	VS072924	0.102	15.55	0.06	3
765.75	767.05	1.3	VS072925	0.022	11.1	0.02	3
767.05	768.35	1.3	VS072926	0.136	12.85	0.08	3
768.35	769.55	1.2	VS072927	0.051	16.35	0.05	3
769.55	770.85	1.3	VS072928	0.061	13.7	0.06	3
770.85	772.2	1.35	VS072930	0.061	13.2	0.03	3
772.2	773.2	1	VS072931	0.07	13.7	0.07	3
773.2	774.3	1.1	VS072932	0.054	13.85	0.08	3
774.3	775.6	1.3	VS072933	0.041	14.75	0.05	3
775.6	776.9	1.3	VS072934	0.029	14.45	0.05	3
776.9	778.2	1.3	VS072935	0.007	14.45	0.005	3
778.2	779.4	1.2	VS072936	0.012	15.45	0.02	3
779.4	780.6	1.2	VS072937	0.158	15.25	0.28	3
780.6	781.9	1.3	VS072938	0.812	16.8	2.07	3
781.9	783.2	1.3	VS072939	0.161	15.1	0.39	3
783.2	784.4	1.2	VS072941	0.008	15.9	0.02	3
784.4	785.7	1.3	VS072942	0.002	15.25	0.005	3
785.7	786.9	1.2	VS072943	0.019	16.65	0.02	3
786.9	788.2	1.3	VS072944	0.029	11.45	0.04	3
788.2	789.5	1.3	VS072945	0.067	13.1	0.08	3
789.5	790.8	1.3	VS072946	0.107	13.45	0.19	3
790.8	792.1	1.3	VS072947	0.037	13.25	0.04	3
792.1	793.4	1.3	VS072948	0.091	13.35	0.12	3
793.4	794.65	1.25	VS072949	0.104	10.55	0.11	3
794.65	795.9	1.25	VS072950	0.083	17.9	0.07	3
795.9	797.2	1.3	VS072952	0.074	13.35	0.09	3
797.2	798.3	1.1	VS072953	0.059	15	0.08	3
798.3	799.6	1.3	VS072954	0.016	14.2	0.005	3
799.6	800.85	1.25	VS072955	0.004	13.6	0.005	3
800.85	802.2	1.35	VS072956	0.014	14.55	0.005	3
802.2	803.45	1.25	VS072957	0.05	11.95	0.03	3
803.45	804.75	1.3	VS072958	0.026	15.7	0.02	3
804.75	806.05	1.3	VS072959	0.012	14.5	0.02	3
806.05	807.3	1.25	VS072960	0.019	14.65	0.005	3
807.3	808.6	1.3	VS072961	0.006	15.5	0.03	3
808.6	809.95	1.35	VS072963	0.003	14.6	0.02	3
809.95	811.25	1.3	VS072964	0.01	15.2	0.02	3
811.25	812.55	1.3	VS072965	0.022	13.3	0.03	3
812.55	813.85	1.3	VS072966	0.014	11.8	0.005	3
813.85	815.15	1.3	VS072967	0.013	11.75	0.05	3
815.15	816.1	0.95	VS072968	0.227	8.22	0.82	3.03
816.1	817.25	1.15	VS072969	1.61	17.9	5.41	3.46
817.25	818.4	1.15	VS072970	0.451	24.4	1.48	3.73
818.4	819.65	1.25	VS072971	0.192	15.4	0.65	3.49
819.65	820.95	1.3	VS072972	1.13	15.2	4.34	3.4
820.95	822.25	1.3	VS072974	0.027	14.55	0.07	3

HOLE ID: VDD25013B							
DEPTH_FROM	DEPTH_TO	SAMPLE_LENGTH	SAMPLE_ID	CU_PCT	FE_PCT	AG_PPM	DENSITY
822.25	823.55	1.3	VS072975	0.021	13.3	0.09	3
823.55	824.8	1.25	VS072976	0.012	11.15	0.07	3
824.8	826.1	1.3	VS072977	0.367	11.4	1.23	3.15
826.1	827	0.9	VS072978	0.534	21.2	1.69	3.35
827	827.85	0.85	VS072979	0.748	21.9	2.62	3.26
827.85	829.15	1.3	VS072980	0.041	11.05	0.15	2.99
829.15	830.4	1.25	VS072981	0.022	11.3	0.12	3
830.4	831.55	1.15	VS072982	0.029	9.8	0.1	3
831.55	832.5	0.95	VS072983	0.073	10.4	0.28	3
832.5	833.4	0.9	VS072985	0.142	10.25	0.48	3
833.4	834.65	1.25	VS072986	0.177	11.05	0.55	3.06
834.65	835.95	1.3	VS072987	0.069	11.2	0.26	3.01
835.95	837.2	1.25	VS072988	0.163	12.45	0.51	3.25
837.2	838.5	1.3	VS072989	0.136	11.6	0.46	3
838.5	839.8	1.3	VS072990	0.136	12.3	0.35	3
839.8	841.1	1.3	VS072991	0.061	11.9	0.18	3
841.1	842.4	1.3	VS072992	0.025	13.45	0.14	3
842.4	843.6	1.2	VS072993	0.015	13.55	0.08	3
843.6	844.9	1.3	VS072994	0.25	12.55	0.74	3
844.9	845.8	0.9	VS072996	0.158	14.7	0.42	3.03
845.8	846.65	0.85	VS072997	0.979	21.4	2.41	3.26
846.65	847.9	1.25	VS072998	0.156	11.5	0.36	3
847.9	848.85	0.95	VS072999	0.061	10.35	0.2	3
848.85	850.1	1.25	VS073000	0.15	10.75	0.39	2.94
850.1	851.35	1.25	VS073001	0.039	10.5	0.11	2.97
851.35	852.6	1.25	VS073002	0.202	10.9	0.33	3
852.6	853.9	1.3	VS073003	0.009	9.99	0.05	2.97
853.9	855.2	1.3	VS073004	0.057	10.1	0.18	3.03
855.2	856.45	1.25	VS073005	0.034	11.2	0.11	3.03
856.45	857.3	0.85	VS073007	0.146	12.65	0.3	3
857.3	858.5	1.2	VS073008	0.196	12.8	0.41	2.95
858.5	859.9	1.4	VS073009	0.991	17.35	2.02	2.71
859.9	861.2	1.3	VS073010	0.6	15.9	1.5	2.93
861.2	862.45	1.25	VS073011	0.255	12.35	0.55	2.88
862.45	863.75	1.3	VS073012	0.111	13.85	0.33	3
863.75	865	1.25	VS073013	0.05	10.95	0.17	3
865	866.3	1.3	VS073014	0.052	11.7	0.17	3
866.3	867.5	1.2	VS073015	0.12	11.55	0.32	3
867.5	868.8	1.3	VS073016	0.206	12.55	0.46	2.94
868.8	870.1	1.3	VS073018	0.263	10.95	0.62	2.91
870.1	870.5	0.4	VS073019	1.335	13.3	2.98	3.01
870.5	871.5	1	VS073020	0.2	10.6	0.52	2.91
871.5	872.3	0.8	VS073021	0.537	25.5	1.89	3
872.3	873.3	1	VS073022	0.117	11.4	0.33	3
873.3	874.4	1.1	VS073023	0.035	11.1	0.1	3
874.4	875.65	1.25	VS073024	0.132	11.55	0.3	3
875.65	876.95	1.3	VS073025	0.108	8.87	0.22	3

HOLE ID: VDD25013B							
DEPTH_FROM	DEPTH_TO	SAMPLE_LENGTH	SAMPLE_ID	CU_PCT	FE_PCT	AG_PPM	DENSITY
876.95	878.05	1.1	VS073026	0.019	11.35	0.07	3
878.05	879.35	1.3	VS073027	0.013	9.64	0.11	3
879.35	880.65	1.3	VS073029	0.089	11.15	0.17	3
880.65	881.65	1	VS073030	0.084	10.3	0.15	2.9
881.65	882.5	0.85	VS073031	0.394	11.15	0.85	2.9
882.5	883.4	0.9	VS073032	0.136	10.15	0.28	3
883.4	884.13	0.73	VS073033	0.999	17.4	2.01	3.21
884.13	884.77	0.64	VS073034	0.647	11.4	1.27	3.04
884.77	886	1.23	VS073035	0.327	9.16	0.56	2.95
886	887.28	1.28	VS073036	0.358	12.2	0.76	2.95
887.28	888.37	1.09	VS073037	1.705	27.1	3.23	3.11
888.37	889.15	0.78	VS073038	1.025	22.7	1.86	3.42
889.15	890.18	1.03	VS073040	2.08	23.7	3.43	3.16
890.18	891.2	1.02	VS073041	1.035	20.1	1.93	3.33
891.2	892.5	1.3	VS073042	0.413	15.95	0.73	3.24
892.5	893.8	1.3	VS073043	0.099	11.2	0.2	2.9
893.8	895.05	1.25	VS073044	0.875	14.65	1.51	3.32
895.05	896.25	1.2	VS073045	0.659	12.8	1.2	3.01
896.25	897.43	1.18	VS073046	0.06	9.92	0.15	2.95
897.43	898.7	1.27	VS073047	0.16	8.93	0.31	3.03
898.7	899.72	1.02	VS073048	0.168	10.8	0.32	2.96
899.72	900.6	0.88	VS073049	0.374	18.05	0.74	3.04
900.6	901.5	0.9	VS073050	2.66	56	5.05	4.74
901.5	902.25	0.75	VS073052	1.475	40.1	2.51	3.85
902.25	903.55	1.3	VS073053	0.12	10.45	0.26	3.03
903.55	904.77	1.22	VS073054	0.076	11.7	0.15	2.99
904.77	906	1.23	VS073055	0.05	10.65	0.1	3
906	907.25	1.25	VS073056	0.055	11.85	0.08	3
907.25	908.55	1.3	VS073057	0.049	11.3	0.1	3
908.55	909.85	1.3	VS073058	0.095	10.45	0.29	3
909.85	911.15	1.3	VS073059	0.025	9.49	0.07	2.93
911.15	912.45	1.3	VS073060	0.017	9.99	0.04	3
912.45	913.75	1.3	VS073061	0.06	10.75	0.11	3
913.75	915.05	1.3	VS073063	0.069	10.5	0.12	3
915.05	916.25	1.2	VS073064	0.126	9.66	0.21	3
916.25	917.5	1.25	VS073065	0.036	10.2	0.07	3
917.5	918.8	1.3	VS073066	0.038	9.88	0.08	3
918.8	920.1	1.3	VS073067	0.063	10.6	0.11	3
920.1	921.4	1.3	VS073068	0.091	11.75	0.18	2.96
921.4	922.7	1.3	VS073069	0.053	11.85	0.15	3
922.7	924	1.3	VS073070	0.174	12.5	0.25	3
924	925.3	1.3	VS073071	0.032	12.9	0.08	3
925.3	926.6	1.3	VS073072	0.047	13.6	0.18	3.04
926.6	927.9	1.3	VS073074	0.042	13.7	0.1	3.12
927.9	929.2	1.3	VS073075	0.081	12.05	0.17	3.04
929.2	930.55	1.35	VS073076	0.032	10.85	0.07	2.94
930.55	931.85	1.3	VS073077	0.125	12.65	0.24	2.99

HOLE ID: VDD25013B							
DEPTH_FROM	DEPTH_TO	SAMPLE_LENGTH	SAMPLE_ID	CU_PCT	FE_PCT	AG_PPM	DENSITY
931.85	933.15	1.3	VS073078	0.164	11	0.29	2.98
933.15	934.45	1.3	VS073079	0.051	11.7	0.1	3.26
934.45	935.75	1.3	VS073080	0.101	10.9	0.17	3.04
935.75	937.05	1.3	VS073081	0.178	9.6	0.29	2.97
937.05	938.35	1.3	VS073082	0.258	6.94	0.38	2.95
938.35	939.25	0.9	VS073083	0.16	7	0.23	2.89
939.25	940	0.75	VS073085	0.09	8.7	0.18	2.93
940	941.3	1.3	VS073086	0.14	9.58	0.24	3.05
941.3	942.4	1.1	VS073087	0.379	13.95	0.45	3.25
942.4	943.7	1.3	VS073088	0.734	11.05	1.08	3
943.7	945	1.3	VS073089	0.412	11.65	0.52	3.07
945	946.25	1.25	VS073090	0.339	13.3	0.5	3.03
946.25	947.55	1.3	VS073091	1.155	11.95	1.57	3.13
947.55	948.85	1.3	VS073092	0.624	11.05	0.87	3.1
948.85	950.1	1.25	VS073093	0.261	10.35	0.34	3.1
950.1	951.4	1.3	VS073094	0.666	12.95	0.93	3.1
951.4	952.7	1.3	VS073096	0.257	12.1	0.4	2.99
952.7	954	1.3	VS073097	0.394	11.1	0.51	2.99
954	955.3	1.3	VS073098	0.364	11.85	0.54	3.1
955.3	955.92	0.62	VS073099	0.333	10.2	0.44	3.1
955.92	957.13	1.21	VS073100	0.31	13.1	0.39	3.1
957.13	958	0.87	VS073101	2.24	11.75	2.97	3.1
958	959	1	VS073102	0.622	11	0.81	3.1
959	960	1	VS073103	0.394	11.1	0.5	3.1
960	961.2	1.2	VS073104	0.513	10.4	0.67	3.1
961.2	962.4	1.2	VS073105	0.574	10.55	0.87	3.05
962.4	963.65	1.25	VS073107	0.736	10.7	1	3.1
963.65	964.95	1.3	VS073108	0.67	9.67	0.89	3.1
964.95	966.15	1.2	VS073109	0.704	9.97	0.88	3.1
966.15	967.3	1.15	VS073110	0.861	10.45	1.01	2.99
967.3	968.5	1.2	VS073111	0.789	10.75	1.05	3.1
968.5	969.7	1.2	VS073112	1.06	10.9	1.49	3.1
969.7	970.95	1.25	VS073113	1.3	12.85	2.06	3.1
970.95	972.25	1.3	VS073114	1.565	12.75	2.02	3.02
972.25	973.5	1.25	VS073115	0.78	12.35	0.99	3.1
973.5	974.75	1.25	VS073116	1.16	16	1.5	3.36
974.75	976.05	1.3	VS073118	0.486	11.7	0.58	3.1
976.05	977.35	1.3	VS073119	1.27	12.5	1.74	3.1
977.35	978.6	1.25	VS073120	1.05	11.95	1.35	3.1
978.6	979.88	1.28	VS073121	0.984	13.15	1.15	3.03
979.88	980.75	0.87	VS073122	0.933	11.55	1.12	3.1
980.75	982	1.25	VS073123	1.1	11.55	1.46	3.1
982	983.3	1.3	VS073124	2.32	10.7	3.12	2.94
983.3	984.45	1.15	VS073125	1.8	9.73	2.39	2.94
984.45	985.75	1.3	VS073126	2.03	10.4	2.77	3.1
985.75	986.95	1.2	VS073127	2.44	12.15	3.59	3.1
986.95	988.25	1.3	VS073129	1.155	12.15	1.67	3

HOLE ID: VDD25013B							
DEPTH_FROM	DEPTH_TO	SAMPLE_LENGTH	SAMPLE_ID	CU_PCT	FE_PCT	AG_PPM	DENSITY
988.25	989.55	1.3	VS073130	0.363	13.45	0.58	3.1
989.55	990.85	1.3	VS073131	0.714	12.05	1.07	3.1
990.85	992.15	1.3	VS073132	0.663	12.85	0.91	3
992.15	993.4	1.25	VS073133	0.91	11.85	1.49	3.1
993.4	994.6	1.2	VS073134	0.467	10.1	0.71	3.1
994.6	995.9	1.3	VS073135	0.361	9.89	0.54	3.1
995.9	997.2	1.3	VS073136	0.551	9.57	0.86	3.1
997.2	998.13	0.93	VS073137	1.225	10.95	1.82	3.03
998.13	999.32	1.19	VS073138	0.799	9.94	1.4	3.1
999.32	1000.6	1.28	VS073140	0.328	11.8	0.51	3.1
1000.6	1001.9	1.3	VS073141	0.263	13.25	0.38	3.1
1001.9	1003.2	1.3	VS073142	0.984	11.3	1.4	3.1
1003.2	1004.5	1.3	VS073143	0.929	11.9	1.3	3.1
1004.5	1005.5	1	VS073144	0.316	12.65	0.43	3.1
1005.5	1006.45	0.95	VS073145	1.725	21.3	2.64	3.33
1006.45	1007.75	1.3	VS073146	0.454	11.5	0.6	3.1
1007.75	1009	1.25	VS073147	0.624	11.05	1.17	3.1
1009	1010.3	1.3	VS073148	0.324	11	0.41	3.1
1010.3	1011.6	1.3	VS073149	0.756	13.2	0.98	3.09
1011.6	1012.9	1.3	VS073151	0.654	12.1	0.88	3.1
1012.9	1013.3	0.4	VS073152	6.89	22.7	8.8	3.1
1013.3	1014.6	1.3	VS073153	0.114	11.1	0.21	3.1
1014.6	1015.8	1.2	VS073154	0.76	10.4	1.02	3.1
1015.8	1016.8	1	VS073155	0.995	12.15	1.65	3.08
1016.8	1018.1	1.3	VS073156	0.269	11.35	0.53	3.1
1018.1	1019.4	1.3	VS073157	0.542	13.5	0.85	3.18
1019.4	1020.2	0.8	VS073158	6.08	25	7.71	3.1
1020.2	1021.5	1.3	VS073159	0.283	10.95	0.38	3.1
1021.5	1022.1	0.6	VS073160	5.83	17.45	8.04	3.1
1022.1	1023.4	1.3	VS073161	0.142	9.22	0.26	3.1
1023.4	1024.6	1.2	VS073162	0.162	15.2	0.31	2.98
1024.6	1025.7	1.1	VS073164	0.197	9.58	0.35	2.97
1025.7	1027	1.3	VS073165	0.518	11.75	0.74	3.1
1027	1028.3	1.3	VS073166	1.12	14.65	1.55	3.1
1028.3	1029.6	1.3	VS073167	0.993	12.25	1.33	3.1
1029.6	1030.6	1	VS073168	1.445	12.65	2.09	3.1
1030.6	1031.3	0.7	VS073169	0.116	9.52	0.19	3.1
1031.3	1032.5	1.2	VS073170	2.3	16	3.05	3.25
1032.5	1033.3	0.8	VS073171	1.01	19.5	1.35	3.1
1033.3	1034	0.7	VS073172	0.156	14.25	0.26	3.01
1034	1035.3	1.3	VS073173	0.104	11.25	0.27	3
1035.3	1036.6	1.3	VS073174	0.093	9.92	0.15	3
1036.6	1037.9	1.3	VS073175	0.33	9.44	0.44	3
1037.9	1039.2	1.3	VS073176	0.605	9.57	0.86	3
1039.2	1040.3	1.1	VS073178	0.376	8.98	0.53	2.88
1040.3	1041.5	1.2	VS073179	0.255	13.8	0.39	3
1041.5	1042.3	0.8	VS073180	0.21	11.4	0.25	3

HOLE ID: VDD25013B							
DEPTH_FROM	DEPTH_TO	SAMPLE_LENGTH	SAMPLE_ID	CU_PCT	FE_PCT	AG_PPM	DENSITY
1042.3	1044.1	1.8	VS073181	0.927	8.58	1.04	3
1044.1	1045.4	1.3	VS073182	0.414	10.2	0.51	2.91
1045.4	1046.7	1.3	VS073183	0.419	9.46	0.61	3
1046.7	1048	1.3	VS073184	0.314	9.37	0.4	3
1048	1049	1	VS073185	0.388	10.8	0.46	3.02
1049	1050.3	1.3	VS073186	0.269	8.96	0.31	3
1050.3	1051.6	1.3	VS073187	0.215	9.6	0.36	3
1051.6	1052.9	1.3	VS073188	0.493	10.1	1.16	3
1052.9	1054.2	1.3	VS073189	0.239	9.78	0.33	3
1054.2	1055.5	1.3	VS073190	0.188	11.1	0.23	3
1055.5	1056.5	1	VS073192	0.292	12.75	0.34	2.94
1056.5	1057.8	1.3	VS073193	0.054	11.65	0.09	3
1057.8	1059.1	1.3	VS073194	0.123	12.85	0.23	3
1059.1	1060.4	1.3	VS073195	0.185	11.8	0.28	3
1060.4	1061.7	1.3	VS073196	0.116	12.65	0.25	3.02
1061.7	1063	1.3	VS073197	0.121	10.65	0.18	3
1063	1064.3	1.3	VS073198	0.238	10.35	0.33	3
1064.3	1065.6	1.3	VS073199	0.346	10.95	0.5	3
1065.6	1066.9	1.3	VS073200	0.541	9.1	0.64	3
1066.9	1068.2	1.3	VS073201	0.452	8.49	0.53	2.91
1068.2	1069.5	1.3	VS073202	0.535	10.55	0.69	2.85
1069.5	1070.8	1.3	VS073203	0.911	11.45	1.06	3
1070.8	1072.1	1.3	VS073204	0.114	11.1	0.16	3
1072.1	1073.4	1.3	VS073206	0.271	8.83	0.41	3
1073.4	1074.7	1.3	VS073207	1.02	11.8	1.32	2.97
1074.7	1076	1.3	VS073208	0.188	10.3	0.27	3
1076	1077.3	1.3	VS073209	0.052	11.8	0.08	3
1077.3	1078.6	1.3	VS073210	0.85	12.7	1	2.9
1078.6	1079.6	1	VS073211	0.441	13.05	0.54	3
1079.6	1080.4	0.8	VS073212	1.185	10.95	1.36	3
1080.4	1081.2	0.8	VS073213	0.561	9.89	0.72	3
1081.2	1082.45	1.25	VS073214	0.733	10.1	0.97	3
1082.45	1083.2	0.75	VS073216	0.216	11.8	0.31	3
1083.2	1084.3	1.1	VS073217	0.727	10.35	0.86	2.96
1084.3	1085.62	1.32	VS073219	0.599	11.6	0.68	3
1085.62	1086.7	1.08	VS073220	0.251	10	0.3	2.99
1086.7	1087.8	1.1	VS073221	0.112	8.89	0.13	3.02
1087.8	1088.7	0.9	VS073222	0.042	12.15	0.08	3
1088.7	1089.3	0.6	VS073223	0.098	18.75	0.13	3
1089.3	1090.6	1.3	VS073224	0.489	12.45	0.55	2.93
1090.6	1091.9	1.3	VS073225	0.844	9.76	0.92	3
1091.9	1093.2	1.3	VS073226	1.105	9.97	1.4	2.89
1093.2	1094.4	1.2	VS073227	0.5	13.4	0.7	3
1094.4	1095.6	1.2	VS073228	0.201	10.85	0.22	2.94
1095.6	1096.6	1	VS073230	0.375	12.2	0.32	3
1096.6	1097.7	1.1	VS073231	0.805	11.05	0.28	3.2
1097.7	1099	1.3	VS073232	0.282	11	0.14	3.03

HOLE ID: VDD25013B							
DEPTH_FROM	DEPTH_TO	SAMPLE_LENGTH	SAMPLE_ID	CU_PCT	FE_PCT	AG_PPM	DENSITY
1099	1100	1	VS073233	0.079	10.75	0.05	2.95
1100	1101	1	VS073234	0.261	11.05	0.15	3
1101	1102	1	VS073235	0.247	10.7	0.15	3.05
1102	1103.1	1.1	VS073236	0.322	10.85	0.18	3
1103.1	1104	0.9	VS073237	1.85	12.85	1.28	3
1104	1105	1	VS073238	0.384	11.75	0.76	2.97
1105	1106	1	VS073239	0.788	13.6	1.46	3.11
1106	1106.8	0.8	VS073241	0.14	17.7	0.51	3

HOLE ID: VDD25013C							
DEPTH_FROM	DEPTH_TO	SAMPLE_LENGTH	SAMPLE_ID	CU_PCT	FE_PCT	AG_PPM	DENSITY
947.5	948.6	1.1	VS073468	0.456	10.95	0.57	3.38
948.6	949.7	1.1	VS073469	0.428	9.45	0.52	3.11
949.7	950.75	1.05	VS073470	0.823	11.5	1.24	3.19
950.75	952.05	1.3	VS073471	0.333	12.2	0.41	3.35
952.05	953.35	1.3	VS073472	0.373	11	0.5	3.33
953.35	954.65	1.3	VS073473	0.272	11.05	0.54	3.13
954.65	955.95	1.3	VS073474	0.495	12.8	0.63	3.65
955.95	957.2	1.25	VS073475	0.931	12.45	1.23	3.23
957.2	958.45	1.25	VS073476	0.719	11.15	0.89	2.95
958.45	959.65	1.2	VS073478	0.47	10.75	0.55	3.15
959.65	960.95	1.3	VS073479	0.867	10.25	1.06	3.32
960.95	962.2	1.25	VS073480	0.832	9.22	1.12	3.1
962.2	963.5	1.3	VS073481	0.679	11.9	0.88	2.97
963.5	964.2	0.7	VS073482	0.97	9.43	1.22	3.25
964.2	965.45	1.25	VS073483	0.605	10.95	0.74	3.13
965.45	966.7	1.25	VS073484	0.497	9.93	0.65	3.16
966.7	967.7	1	VS073485	1.04	9.47	1.36	3.12
967.7	968.7	1	VS073486	0.919	10.2	1.23	3.25
968.7	969.5	0.8	VS073488	0.757	10.3	0.98	3.07
969.5	970.8	1.3	VS073489	0.699	9.59	1.04	3.11
970.8	972.1	1.3	VS073490	1.12	12.4	1.58	3.14
972.1	973.35	1.25	VS073491	1.295	15.8	1.75	3.41
973.35	974.6	1.25	VS073492	1.575	12.8	1.92	3.28
974.6	975.85	1.25	VS073493	1.75	12.8	2.04	3.13
975.85	976.35	0.5	VS073494	0.747	25.9	0.91	3.62
976.35	977.5	1.15	VS073495	0.703	10.3	0.78	3.34
977.5	978.1	0.6	VS073496	0.97	9.98	1.06	3.16
978.1	979.4	1.3	VS073498	0.78	11.3	0.8	3.22
979.4	980.7	1.3	VS073499	1.805	10.85	2.34	3.25
980.7	982	1.3	VS073500	1.895	10.15	2.08	2.98
982	983.25	1.25	VS073501	1.165	9.62	1.52	3.14
983.25	984.3	1.05	VS073502	1.94	10.8	2.43	3.23
984.3	985.35	1.05	VS073503	1.015	10.5	1.34	3.03
985.35	986.4	1.05	VS073504	1.1	12.1	1.52	3.36
986.4	987.4	1	VS073505	0.748	12.15	1.04	3.31
987.4	988.4	1	VS073506	0.473	13.15	0.74	3.27
988.4	989.45	1.05	VS073507	0.476	13.2	0.68	3.29
989.45	990.7	1.25	VS073509	0.358	12.85	0.49	3.24
990.7	992	1.3	VS073510	1.185	13.1	1.68	3.08
992	993.15	1.15	VS073511	0.491	10.7	0.61	3.06
993.15	994.45	1.3	VS073512	0.914	11.1	1.08	3.25
994.45	995.75	1.3	VS073513	0.636	9.31	0.94	3.16
995.75	996.9	1.15	VS073514	0.715	10.05	0.96	3.02
996.9	998.2	1.3	VS073515	0.639	9.27	0.85	3.05
998.2	999.5	1.3	VS073516	0.906	11.4	1.38	3.28
999.5	1000.8	1.3	VS073518	0.2	13.05	0.33	3.09
1000.8	1002.1	1.3	VS073519	0.41	12.3	0.58	3.14

HOLE ID: VDD25013C							
DEPTH_FROM	DEPTH_TO	SAMPLE_LENGTH	SAMPLE_ID	CU_PCT	FE_PCT	AG_PPM	DENSITY
1002.1	1003.4	1.3	VS073520	0.872	10.7	1.18	3.13
1003.4	1004.7	1.3	VS073521	0.599	11.6	0.78	3.2
1004.7	1006	1.3	VS073522	0.749	14.25	1.08	3.52
1006	1007	1	VS073523	2.35	17.1	4.26	3.1
1007	1008.15	1.15	VS073524	0.529	10.35	0.72	3.21
1008.15	1009.25	1.1	VS073525	0.666	11.05	1.03	3.36
1009.25	1010.4	1.15	VS073526	0.531	11.2	0.75	2.95
1010.4	1011.7	1.3	VS073528	1.425	14.3	1.92	3.07
1011.7	1013	1.3	VS073529	0.3	10.4	0.42	3
1013	1014.3	1.3	VS073530	0.439	8.88	0.65	2.93
1014.3	1015.55	1.25	VS073531	0.3	11.6	0.55	3.11
1015.55	1016.85	1.3	VS073532	0.275	9.18	0.45	3
1016.85	1018.15	1.3	VS073533	0.26	9.71	0.44	2.95
1018.15	1019.35	1.2	VS073534	0.5	11.7	0.64	3.05
1019.35	1020.65	1.3	VS073535	0.655	12.45	0.87	3.07
1020.65	1021.95	1.3	VS073536	0.544	11.7	0.75	3.05
1021.95	1023.2	1.25	VS073538	0.725	14.5	0.95	3.16
1023.2	1024.35	1.15	VS073539	0.859	11	1.21	2.99
1024.35	1025.45	1.1	VS073540	0.571	14.45	0.83	3.02
1025.45	1026.5	1.05	VS073541	0.121	12.85	0.19	3.04
1026.5	1027.35	0.85	VS073542	0.212	16	0.27	3.06
1027.35	1028.3	0.95	VS073543	0.498	13.15	0.64	3.05
1028.3	1029.55	1.25	VS073544	2.67	28.2	3.47	3.55
1029.55	1030.8	1.25	VS073545	0.687	10.95	0.92	3.02
1030.8	1032.1	1.3	VS073546	3.46	12.65	4.29	2.91
1032.1	1033.15	1.05	VS073547	1.16	12.15	1.44	3.16
1033.15	1034.4	1.25	VS073549	0.287	12.15	0.35	3.18
1034.4	1035.3	0.9	VS073550	0.27	9.4	0.34	3
1035.3	1036.35	1.05	VS073551	0.583	9.45	0.78	2.91
1036.35	1037.6	1.25	VS073552	0.445	11.55	0.6	3
1037.6	1038.9	1.3	VS073553	0.761	10.1	0.9	2.97
1038.9	1040.2	1.3	VS073554	0.742	10.45	0.88	2.97
1040.2	1041.5	1.3	VS073555	0.409	11.5	0.45	3.12
1041.5	1042.8	1.3	VS073556	0.156	10.75	0.19	2.98
1042.8	1043.9	1.1	VS073557	1.18	11.2	1.96	3
1043.9	1044.9	1	VS073559	1.22	11.1	1.31	3.03
1044.9	1046.2	1.3	VS073560	0.541	10.65	0.85	3
1046.2	1047.3	1.1	VS073561	0.5	11.75	0.55	3.03
1047.3	1048.4	1.1	VS073562	0.692	12.3	1.05	3
1048.4	1049.5	1.1	VS073563	0.253	11.2	0.32	3
1049.5	1050.6	1.1	VS073564	0.165	11.8	0.38	3
1050.6	1051.9	1.3	VS073565	0.327	10.3	0.63	2.96
1051.9	1053.1	1.2	VS073566	0.212	13.05	0.35	3.06
1053.1	1054.4	1.3	VS073567	0.164	11.9	0.21	2.93
1054.4	1055.7	1.3	VS073569	0.452	11.6	0.56	3.12
1055.7	1057	1.3	VS073570	0.344	12.25	0.4	2.97
1057	1058.25	1.25	VS073571	0.05	12.25	0.05	2.97

HOLE ID: VDD25013C							
DEPTH_FROM	DEPTH_TO	SAMPLE_LENGTH	SAMPLE_ID	CU_PCT	FE_PCT	AG_PPM	DENSITY
1058.25	1059.55	1.3	VS073572	0.052	13.45	0.07	3.14
1059.55	1060.85	1.3	VS073573	0.144	10.85	0.18	2.88
1060.85	1062.15	1.3	VS073574	0.186	12.55	0.23	3.08
1062.15	1063.4	1.25	VS073575	0.158	11.6	0.2	3.13
1063.4	1064.65	1.25	VS073576	0.495	9.49	0.51	2.98
1064.65	1065.65	1	VS073577	0.916	8.48	0.9	3.02
1065.65	1066.95	1.3	VS073579	0.934	10.45	0.89	2.97
1066.95	1068.2	1.25	VS073580	0.251	12.65	0.28	2.92
1068.2	1069.5	1.3	VS073581	0.209	9.01	0.28	3.03
1069.5	1070.6	1.1	VS073582	0.083	8.65	0.13	2.98
1070.6	1071.7	1.1	VS073583	0.032	8.6	0.06	2.95
1071.7	1073	1.3	VS073584	0.569	11.05	0.72	3
1073	1074.3	1.3	VS073585	0.514	11.4	0.99	2.96
1074.3	1075.6	1.3	VS073586	0.349	11	0.43	2.96
1075.6	1076.9	1.3	VS073588	0.332	10.7	0.41	2.93
1076.9	1078.2	1.3	VS073589	0.269	11.6	0.32	3.01
1078.2	1079.4	1.2	VS073590	0.594	11.75	0.7	3.01
1079.4	1080.7	1.3	VS073591	0.377	11.75	0.4	3.04
1080.7	1082	1.3	VS073592	0.611	13.05	0.71	3.02
1082	1083.3	1.3	VS073593	0.704	10.5	0.93	3.01
1083.3	1084.6	1.3	VS073594	0.774	12.85	0.84	3.05
1084.6	1085.9	1.3	VS073595	0.527	11.4	0.6	3.01
1085.9	1087	1.1	VS073596	0.558	11.2	0.58	3
1087	1088	1	VS073597	0.68	11.25	0.75	3.08
1088	1089.15	1.15	VS073599	0.184	8.75	0.24	2.96
1089.15	1090.35	1.2	VS073600	0.261	9.78	0.36	2.98
1090.35	1091.65	1.3	VS073601	0.179	10.45	0.15	3.08
1091.65	1092.95	1.3	VS073602	0.267	16	0.13	3.24
1092.95	1093.65	0.7	VS073603	0.837	11.35	0.32	3
1093.65	1094.8	1.15	VS073604	0.376	11	0.09	2.99
1094.8	1096	1.2	VS073605	0.423	12.9	0.11	3.08
1096	1097.2	1.2	VS073606	0.226	11.3	0.12	2.93
1097.2	1098.35	1.15	VS073607	0.093	12.25	0.06	3.04
1098.35	1099.5	1.15	VS073888	0.013	11.4	0.03	3.49
1099.5	1100.65	1.15	VS073889	0.033	12.5	0.03	2.98
1100.65	1101.8	1.15	VS073890	0.012	10.85	0.005	2.99
1101.8	1102.95	1.15	VS073891	0.206	11.3	1.18	3.06
1102.95	1104.25	1.3	VS073892	0.314	11.4	0.33	3.47
1104.25	1105.5	1.25	VS073893	0.576	10.7	0.41	3.52
1105.5	1106.65	1.15	VS073895	1.94	13.25	1.62	3.34
1106.65	1107.8	1.15	VS073896	0.57	12.7	0.34	3.05
1107.8	1109	1.2	VS073897	0.799	13.75	0.61	3.12
1109	1110.1	1.1	VS073898	0.381	16.2	0.28	3.27
1110.1	1111.4	1.3	VS073899	0.263	10.5	0.16	3.09
1111.4	1112.7	1.3	VS073900	0.317	12.75	0.83	3.13
1112.7	1114	1.3	VS073901	0.109	11.2	0.17	3.23
1114	1115.15	1.15	VS073902	0.271	11.45	0.24	3.16

HOLE ID: VDD25013C							
DEPTH_FROM	DEPTH_TO	SAMPLE_LENGTH	SAMPLE_ID	CU_PCT	FE_PCT	AG_PPM	DENSITY
1115.15	1116.2	1.05	VS073903	0.899	13.25	0.78	3.57
1116.2	1117.3	1.1	VS073904	0.566	11.15	0.42	3.3
1117.3	1118.6	1.3	VS073906	0.005	7.33	0.005	3.07
1118.6	1119.9	1.3	VS073907	0.019	7.24	0.02	3.05
1119.9	1121.2	1.3	VS073908	0.007	7.56	0.05	3.26
1121.2	1122.5	1.3	VS073909	0.033	10.55	0.09	3.2
1122.5	1123.8	1.3	VS073910	0.143	14.45	0.18	3.06
1123.8	1125.1	1.3	VS073911	0.041	9.55	0.21	2.97
1125.1	1126.4	1.3	VS073912	0.071	11.15	0.1	3.1
1126.4	1127.7	1.3	VS073913	0.076	11.15	0.16	3.06
1127.7	1129	1.3	VS073915	0.467	12.1	0.44	3.06
1129	1130.3	1.3	VS073916	0.017	13.4	0.03	3.15
1130.3	1131.6	1.3	VS073917	0.043	11.2	0.03	3.04
1131.6	1132.4	0.8	VS073918	0.138	10.45	0.03	3.32
1132.4	1133.3	0.9	VS073919	0.369	16.9	0.11	3
1133.3	1134.4	1.1	VS073920	0.12	26.7	0.11	2.91
1134.4	1135.6	1.2	VS073921	0.368	8.72	0.25	2.9
1135.6	1136.8	1.2	VS073922	0.42	11.35	0.32	3.02
1136.8	1138	1.2	VS073923	0.091	14	0.11	3.09
1138	1139.1	1.1	VS073924	0.088	11.9	0.05	2.99
1139.1	1140.25	1.15	VS073926	0.229	15.65	0.19	3.18
1140.25	1141.4	1.15	VS073927	0.446	14	0.39	3.16
1141.4	1142.55	1.15	VS073928	0.033	11.4	0.07	2.98
1142.55	1143.7	1.15	VS073929	0.146	12.8	0.13	3.3
1143.7	1144.85	1.15	VS073930	0.045	11.7	0.06	3.02
1144.85	1145.9	1.05	VS073931	0.011	12.35	0.03	2.98
1145.9	1146.9	1	VS073932	0.101	13.35	0.11	3
1146.9	1147.85	0.95	VS073933	0.086	11.9	0.07	3.05
1147.85	1149	1.15	VS073935	0.012	10.85	0.03	3.01
1149	1150.15	1.15	VS073936	0.028	11.3	0.03	3.01
1150.15	1151.3	1.15	VS073937	0.075	10.8	0.06	3.04
1151.3	1152.35	1.05	VS073938	0.066	9.89	0.05	3
1152.35	1153.45	1.1	VS073939	0.449	9.79	0.26	3.07
1153.45	1154.5	1.05	VS073940	0.625	9.22	0.26	3.13
1154.5	1155.55	1.05	VS073941	0.13	8.43	0.47	2.95
1155.55	1156.4	0.85	VS073943	0.038	11.75	0.04	3.15
1156.4	1157.7	1.3	VS073944	0.372	9.71	0.2	2.99
1157.7	1159	1.3	VS073945	0.024	9.03	0.06	2.95
1159	1160.3	1.3	VS073946	0.168	9.39	0.74	3.17
1160.3	1161.6	1.3	VS073947	0.025	7.1	0.09	2.93
1161.6	1162.9	1.3	VS073948	0.052	8.87	0.17	2.96
1162.9	1163.6	0.7	VS073949	0.014	8.8	0.05	3.18
1163.6	1164.3	0.7	VS073950	0.284	9.51	0.33	2.95
1164.3	1165.55	1.25	VS073951	0.043	5.98	0.06	3
1165.55	1166.35	0.8	VS073952	0.416	9.5	0.75	3.12
1166.35	1167.35	1	VS073954	0.063	5.23	0.17	2.94
1167.35	1168.6	1.25	VS073955	0.121	7.55	0.1	2.96

HOLE ID: VDD25013C							
DEPTH_FROM	DEPTH_TO	SAMPLE_LENGTH	SAMPLE_ID	CU_PCT	FE_PCT	AG_PPM	DENSITY
1168.6	1169.9	1.3	VS073956	0.273	7.4	0.25	3.03
1169.9	1171.1	1.2	VS073957	0.024	7.4	0.02	3.02
1171.1	1172.3	1.2	VS073958	0.006	7.08	0.02	2.98
1172.3	1173.55	1.25	VS073959	0.068	6.91	0.1	3.12
1173.55	1174.75	1.2	VS073960	0.968	10.5	0.68	3.05
1174.75	1175.5	0.75	VS073961	1.515	10.75	1.1	3.32
1175.5	1176.25	0.75	VS073963	0.034	9.88	0.05	3.18
1176.25	1177.15	0.9	VS073964	0.004	5.5	0.04	2.8
1177.15	1178.15	1	VS073965	1.41	9.54	0.87	2.85
1178.15	1179.2	1.05	VS073966	1.345	9.75	1.5	3.25
1179.2	1180.3	1.1	VS073967	1.095	11.1	0.92	2.94
1180.3	1181.25	0.95	VS073968	1.14	7.23	0.67	3.03
1181.25	1182.55	1.3	VS073970	0.078	5.6	0.07	2.89
1182.55	1183.85	1.3	VS073971	0.047	7.17	0.07	2.89
1183.85	1185.1	1.25	VS073972	0.078	5.57	0.15	2.86
1185.1	1186.35	1.25	VS073973	1.275	5.2	0.78	3.03
1186.35	1187.55	1.2	VS073974	0.55	4.32	0.33	3.25
1187.55	1188.65	1.1	VS073975	0.807	5.92	0.3	3.05
1188.65	1189.7	1.05	VS073976	1.935	6.58	1.06	3.11
1189.7	1190.7	1	VS073977	0.07	4.35	0.06	3.11
1190.7	1191.7	1	VS073978	0.063	5.6	0.05	2.85
1191.7	1192.85	1.15	VS073980	3.22	15.1	2.43	3.64
1192.85	1194	1.15	VS073981	3.05	14.95	2.17	3.13
1194	1195.15	1.15	VS073982	1.835	16.55	1.04	3.3
1195.15	1196.3	1.15	VS073983	2.44	23.4	1.89	3.85
1196.3	1197.5	1.2	VS073985	0.954	8.56	0.58	3.2
1197.5	1198.3	0.8	VS073986	0.256	5.02	0.14	2.92
1198.3	1199.15	0.85	VS073987	0.421	4.42	0.9	2.92
1199.15	1199.6	0.45	VS073988	0.872	3.67	0.59	2.93
1199.6	1200.55	0.95	VS073989	0.051	2.85	0.27	2.9
1200.55	1201.35	0.8	VS073990	0.632	3.87	2.53	2.77
1201.35	1202.4	1.05	VS073991	0.146	2.9	0.28	2.86
1202.4	1203.45	1.05	VS073992	0.108	3.33	0.44	2.88
1203.45	1204.5	1.05	VS073994	0.471	2.97	2.64	2.73
1204.5	1205.3	0.8	VS073995	2.16	7.32	1.73	2.83
1205.3	1206.1	0.8	VS073996	1.84	7.83	1.66	3.04
1206.1	1207.35	1.25	VS073997	0.312	3.02	0.16	2.69
1207.35	1208.6	1.25	VS073998	0.336	3.35	0.19	2.72
1208.6	1209.8	1.2	VS073999	0.218	2.77	0.1	2.73
1209.8	1210.8	1	VS074000	0.565	3.68	0.39	2.7
1210.8	1211.8	1	VS074001	0.655	4.51	0.28	2.81
1211.8	1212.6	0.8	VS074002	0.186	2.68	0.07	2.74
1212.6	1213.4	0.8	VS074003	2.04	6.41	2.13	2.97
1213.4	1214.55	1.15	VS074005	0.348	2.9	0.2	2.85
1214.55	1215.7	1.15	VS074006	0.008	3.11	0.05	2.97
1215.7	1216.85	1.15	VS074007	0.009	2.97	0.04	2.71
1216.85	1217.95	1.1	VS074008	0.003	2.83	0.02	2.7

HOLE ID: VDD25013C							
DEPTH_FROM	DEPTH_TO	SAMPLE_LENGTH	SAMPLE_ID	CU_PCT	FE_PCT	AG_PPM	DENSITY
1217.95	1219.1	1.15	VS074009	0.027	2.12	0.12	2.73
1219.1	1220.25	1.15	VS074010	1.02	3.7	2.77	2.79
1220.25	1221.4	1.15	VS074011	0.218	3.08	0.16	2.92
1221.4	1222.55	1.15	VS074012	0.011	2.12	0.02	3.07
1222.55	1223.7	1.15	VS074013	0.293	2.97	0.1	2.77
1223.7	1224.85	1.15	VS074015	0.436	2.43	0.56	2.71
1224.85	1226.1	1.25	VS074016	0.197	2.93	0.12	2.76
1226.1	1226.55	0.45	VS074017	7.12	9.45	1.65	2.98
1226.55	1227.65	1.1	VS074018	0.026	1.95	0.03	2.68
1227.65	1228.75	1.1	VS074019	0.011	1.85	0.005	2.66
1228.75	1231	2.25	VS074021	0.1	8.76	0.26	3.03
1231	1233.25	2.25	VS074022	0.025	9.1	0.03	2.86
1233.25	1235.45	2.2	VS074023	0.005	9.44	0.005	2.95
1235.45	1238.15	2.7	VS074024	0.002	3.17	0.005	2.7
1238.15	1240.25	2.1	VS074025	0.006	9.27	0.005	2.92
1240.25	1242.35	2.1	VS074026	0.006	8.68	0.005	2.92
1242.35	1244.55	2.2	VS074027	0.001	4.02	0.31	2.75
1244.55	1246.7	2.15	VS074028	0.001	2.08	0.005	2.78
1246.7	1247.6	0.9	VS074029	0.001	2.94	0.005	2.66
1247.6	1250.3	2.7	VS074031	0	2.45	0.005	2.71
1250.3	1253	2.7	VS074032	0	1.95	0.005	2.75
1253	1255.7	2.7	VS074033	0.003	2.12	0.02	2.72
1255.7	1256.55	0.85	VS074034	0.017	6.08	0.06	2.83
1256.55	1258.15	1.6	VS074035	0.014	2.25	0.005	2.77
1258.15	1260.35	2.2	VS074036	0	1.97	0.005	2.71
1260.35	1262.55	2.2	VS074037	0.072	2.32	0.21	2.86
1262.55	1264.75	2.2	VS074038	0.008	1.4	0.02	2.7
1264.75	1266.35	1.6	VS074040	0.02	5.08	0.07	2.72
1266.35	1268.85	2.5	VS074041	0.021	8.9	0.05	2.89
1268.85	1271.85	3	VS074042	0.011	8.96	0.02	3.19
1271.85	1274.85	3	VS074043	0.019	10.5	0.02	3.05
1274.85	1277.85	3	VS074044	0.052	12.35	0.04	3.04
1277.85	1279.6	1.75	VS074045	0.042	12.6	0.04	3.1
1279.6	1281.35	1.75	VS074046	0.017	9.81	0.03	3.05
1281.35	1281.8	0.45	VS074047	0.006	9.58	0.02	3.1
1281.8	1284.8	3	VS074048	0.029	9.55	0.08	3.11
1284.8	1287.8	3	VS074050	0.015	9.1	0.02	3.03
1287.8	1290.8	3	VS074051	0.01	9.22	0.005	3.04
1290.8	1293.1	2.3	VS074052	0.012	9.45	0.02	3.01
1293.1	1295.1	2	VS074053	0.037	9.05	0.08	2.98

APPENDIX 3: REFERENCES

Imana M., Armstrong R., Sandoval D., Jez M., Nkioh E., and Kroeckert M. 2023. "A geological update on the Viscaria Cu-Fe deposit, Kiruna District, Northern Sweden." *SGA 17th Biennial Meeting Proceedings* 1: 363-365.

Tasbicen K., Imaña M., Chávez W.X. Jr. 2023. "Sulfide Mineralogy and Cobalt Department at the Viscaria Cu-Fe Deposit, Kiruna District, Northern Sweden." *Poster presented at SEG 2023 Conference: Resourcing the Green Transition*.

Viscaria Kiruna AB. 2025a. "VISCARIA FS Report Executive Summary." Retrieved from <https://www.viscaria.com/en/wp-content/uploads/sites/2/2021/10/viscaria-fs-report-executive-summary-250508-250508.pdf>

Viscaria Kiruna AB. 2025b. "PERC Table 1 Viscaria Resource and Reserves." Retrieved from https://www.viscaria.com/en/wp-content/uploads/sites/2/2021/10/table1-perc-may_2025-250521.pdf

APPENDIX 4: CERTIFICATE OF COMPETENT PERSON

As the Competent Person responsible for the information on which the Public Report entitled “Viscaria Exploration Results, Q3, 2025” is based, I hereby state:

1. My name is Thomas Lindholm.
2. I am a senior associate of GeoVista AB, Luleå, Sweden.
3. I am a Mining Engineer, member of the Fennoscandian Association of Metals and Mining Professionals, FAMMP as well as a Fellow of AusIMM (#230476).
4. I graduated with a M.Sc. in mining engineering from the University of Luleå in 1982 and have since worked in exploration and mine development projects in Sweden and abroad.
5. I have participated in or led several feasibility studies for various types of gold, base metal and iron deposits.
6. I meet the requirements of a ‘Competent Person’ as defined explicitly in the PERC Reporting Standard.
7. The CP has visited the site several times, lastly in October 2025, to discuss the feasibility study with the local geologists and engineers.
8. The CP is responsible for the overall review of the entire report.
9. I am not aware of any material fact or material change concerning the subject matter of the Public Report that is not reflected in the Public Report, the omission of which would make the Public Report misleading.
10. I declare that this Public Report appropriately reflects the Competent Person’s view.
11. I am independent of Gruvaktiebolaget Viscaria.
12. I confirm that I have read all the relevant sections of the PERC Reporting Standard 2021. The Public Report has been prepared under the requirements of the PERC Reporting Standard.
13. I do not have, nor do I expect to receive, a direct or indirect interest in the Viscaria mine of Gruvaktiebolaget Viscaria.
14. I have no conflicts of interest in respect of the reporting entity/issuer Gruvaktiebolaget Viscaria or the Viscaria Mine.
15. At the effective date of the Public Report, to the best of my knowledge, information and belief, the Public Report contains all scientific and technical information required to be disclosed in order to make the Public Report not misleading.

Dated at Luleå, Sweden and 2026-02-10.



Thomas Lindholm, member of FAMMP, Fellow AusIMM (#230476)